



# FRIENDS OF THE DELAWARE CANAL CANAL NEWS

## Three Canal “C”s to Cure Cabin Fever

Shake off the last of the cold and grey of winter past. Get back out on the Canal – walk, bike, run, bird watch, fish, whatever you please.... You can also get the satisfaction of making the Canal a safer, more pleasant place to visit. The Friends have three ways that you can help.



*Can you help CAT?*

- \* Canal Clean-Up Day is on Saturday, April 11. Find out about this annual Easton to Bristol spring cleaning effort on pages 3 and 6.
- \* Canal Tenders adopt sections of the Canal, which they monitor and clean up year-round.
- \* The Canal Action Team (CAT) undertakes more heavy-duty projects, such as clearing trees and brush, removing vegetation from locks, and painting bridges on a periodic basis.

**Want to be a Canal Tender?** There are still several sections of the Canal that need to be adopted.

- Tyburn Road to Falls Township Park
- Levittown Shopping Center (the Home Depot end) to the Ramada Inn
- Green Lane to the Lagoon Park in Bristol Borough
- Beaver Street to Riverfront Park in Bristol Borough

Please let us know if you can help to close these gaps (the sections can be divided into smaller segments). Find out details about the Canal Tenders program at [www.fodc.org/canaltenders](http://www.fodc.org/canaltenders).

**The Canal Action Team (CAT) needs more volunteers.** This year’s CAT Work Day schedule is in the making, but one special day has already been set.

*Tuesday, May 5 at 9 a.m. – Meet at the Virginia Forrest Recreation Area to clear the canal prism, as well as the towpath and berm banks, of debris and overgrowth from Coppernose Creek in Lumberville to Centre Bridge. This is an effort to get the Canal ready for the reintroduction of water when the Cuttalossa Culvert replacement project is finished.*

*(continued on p.2)*

## What’s Next?

In spite of a very construction-unfriendly winter, the two major projects preventing Lehigh River water from flowing south of Raubsville have been completed.

PennDOT’s contractor, Bi-State Construction, diligently worked to finish the installation of the new wall south of Locks 22/23 in Raubsville by their January deadline. The US Army Corps of Engineers then required that some additional work be done to the berm bank. The deep freeze impeded this, but is it done now. Bi-State has removed its equipment from the canal prism, but will return in better weather to restore the towpath and other disturbed areas.

The new bypass pipe at Lock 20 south of Kinterville has been replaced. Another impediment to water flow is gone.

With these projects done, the State Park’s plan is to open the gates at Locks 22/23 and let the Lehigh River water flow south as soon as the gates thaw. With any luck, there will be water to watch as spring arrives, and it will make its way down to the south end of Lumberville.

The water will have to be released to the Delaware River at Lumberville because of the Cuttalossa Culvert collapse, which makes it impossible to run water through that area. The State engineers made every effort to design and bid the project as quickly as possible because the closure prevents both water flow and travel on a much-used section of the towpath. The culvert replacement project has been awarded and will begin soon. Details are included in the Park Manager’s Report on page 2.

Even though we all know that the Canal is full of surprises, the probability of having water in the entire Canal from Easton to Bristol by late summer seems good, especially since the Canal south of Morrisville has been brimful this winter – something that hasn’t happened in years.

In the period from spring to late summer, it is likely that only the section from Coppernose Creek in Lumberville to Centre Bridge will be sparsely watered.



*(continued on p.5)*

*What we’re looking for.*



## Friends of the Delaware Canal

145 South Main Street  
New Hope, PA 18938  
Phone & Fax: 215-862-2021  
Email: [friends@fodc.org](mailto:friends@fodc.org)  
Internet: [www.fodc.org](http://www.fodc.org)

### Board of Directors

Brett Webber, *President*  
Jeff Connell, *Vice-President*  
Judith Franlin, *Secretary*  
Peter Sperry, *Treasurer*  
Pam Can  
Joan Fullerton  
Stephanie Garomon  
David Schaeffer  
Miriam Seiden  
Lynn Vogel  
Bill West  
Judy Zipkin-Grasso

### Advisory Board

Randy Apgar  
Allen Black  
Jack Donohue  
William Farkas  
William Getchell  
James Greenwood  
David Heckler  
Pearl Mintzer  
Betty Orlemann  
Deborah Palmer  
Will Rivinus  
David Strawbridge

### Executive Director

Susan Taylor

### Mission

The Friends of the Delaware Canal is an independent, non-profit organization working to restore, preserve, and improve the Delaware Canal and its surroundings. Our primary goals are to ensure that the Canal is fully-watered from Easton to Bristol and the towpath trail is useable over its entire length. We embrace this mission in order to sustain a unique link to our heritage, protect beautiful and diverse natural areas, provide recreational and educational opportunities, and enable the Canal to serve as a community and economic asset.

## Park Manager's Report

Spring is finally here, and the snow/ice is melting. The PennDOT contractor installing a wall between the Canal and Route 611 in Raubsville is done working in the Canal. As soon as our gates at Lock 22/23 in Raubsville thaw, we will open them and begin sending water through the Canal. The plan is to install a coffer dam across the Canal at the southern end of Lumberville in anticipation of the start of the project to replace the culvert that carries the Cuttalossa Creek under the Canal. This project is pretty large in scope as it involves excavating the towpath and Canal bed to replace the culvert. This project will necessitate that we stop the water up stream and the towpath will be closed at this location for the duration of construction. The bid was awarded and we have our initial job conference on March 17 with the contractor, Clearwater Construction.

The Park has received capital funding in the amount of \$13,500,000 for the repair of bridges and culverts along the Canal. The Department of General Services will oversee these projects, and our Department has submitted a list of 30 structures for repairs. Until design and estimates are completed, we will not know how many of the projects will make the cut, but it will be the majority. This is quite the windfall, and we are ecstatic to see this need to address the infrastructure of the Canal recognized by the Legislature. At this point, I am unable to provide a timeline for these projects, as it is too early in the process.

Along with these projects, DCNR is working on other projects, including Phillips' Mill Bridge, Redfield Bridge, Lower Limeport Bridge, and the project to run a passageway through the railroad embankment just south of Morrisville. Work is also continuing to eliminate other obstructions along the towpath including Bridge Street in Morrisville and Tyburn Road in Falls Township. The southern Route 13 obstruction near Green Lane is being addressed currently by PADOT while they are working on Route 13.

We have had some personnel changes at the Park. Gary Magargal had been working for us as a mason out of our Yardley shop. He was promoted to Park Maintenance Supervisor at Tyler State Park. We are in the process of working to fill this position. Sarah Berg, one of our Environmental Education staff, has moved on to Kings Gap State Park to be the Environmental Education Supervisor. We welcome Katie Martens to the Park Staff, who has filled Sarah's spot on the roster. Katie comes to us from Hickory Run State Park, where she had worked as a seasonal Environmental Educator.

I would like to thank New Hope for Our Canal for the work they have done to keep the New Hope section watered, and as always, I thank the Friends of the Delaware Canal for all the work you do in support of this Park.

*Rick Dalton*

## Three Canal "C"s (continued from front page)

If you want to be part of the CAT, please call 215-862-2021 or e-mail [friends@fodc.org](mailto:friends@fodc.org) and give us your contact information and your preferred work locations - north, central, south. You will be added to the list of CAT team members. Details about work days (what the project is, when, where, what to bring) will be e-mailed to you. If you can help, just reply.

During the past several months, there have been some changes in our teams.

- Welcome to the **Yardley Friends Meeting** team, who will be the Canal Tenders for the Mt. Eyre Road to Afton Avenue section in Lower Makefield Township/Yardley Borough.
- Canal Tender **Jeff Connell** will be taking over the Levittown Shopping Center to Falls Township Park section. We thank **Ruth Dorn** for taking care of this area for several years.
- **Kip Mitman** cared for the Canal north of Mill Creek Road in Falls Township for many years. He worked in his neighborhood incessantly, but also turned out for projects all along the Canal, including last summer's eradication of cattails in New Hope. He did everything from picking up trash, to cutting brush with his machete, to rescuing fish. His unexpected death leaves us and the Canal sorely missing him.
- Many thanks to **Brian Dougherty** for his expert and enthusiastic service as a CAT project coordinator.

The work of Clean-Up Day, Canal Tender, and CAT volunteers truly makes a difference.

THANK YOU ALL!

# Calendar of Events

## Saturday, April 11, 9 a.m. Delaware Canal Clean-Up Day

It's spring cleaning time!

Since the advent of the Canal Tenders and CAT programs, the logistics of our annual Delaware Canal Clean-Up Day have changed, but the need to spruce up the Canal before prime visitation season always remains.

Our list of Delaware Canal Clean-Up Day Work Areas, shown on page 6, includes the entire Canal. On the list are sections that will be handled by Canal Tenders, and sections that will be tackled by community coordinators and organizations. Those Tenders and coordinators who have requested additional volunteer help are highlighted in green.

To volunteer, please review the list and choose one of the highlighted locations, then call or e-mail the Canal Tender or Coordinator to offer your assistance. Your Tender or Coordinator will let you know where to meet, what to bring, and answer any questions that you may have.

If your favorite section isn't among the highlighted areas, please don't hesitate to go out and give the Tender or Coordinator a hand. Nearly all will be out on the towpath on Clean-Up Day.

So find your work gloves and come out on April 11 to give the Canal its spring cleaning. If you have a canoe or kayak, bring it along. The trash that accumulates on the berm side of the Canal is most easily retrieved from a boat, and, sometimes, it's the only way to get to it.

As always, individual clean-up efforts are always welcome – anytime, anywhere.

*Last year two canal-side neighbors launched their canoe and helped volunteer Jeff Connell rid the Canal of accumulated branches and trash. We hope to see more willing neighbors this year.*



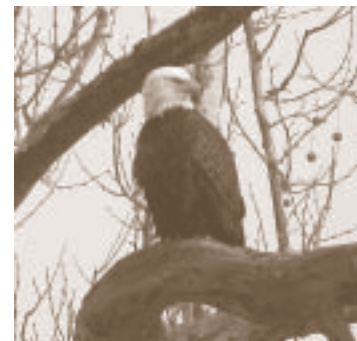
## Sunday, April 26, 2 p.m. In Search of Bald Eagles and More

Meet at the Durham Lock parking area, 1407 Easton Road (Route 611), Kintnersville, PA 18930. The parking area is adjacent to the intersection of Routes 611 and 212.

On this 5-mile, roundtrip walk we hope to see nesting bald eagles on the river island near the Canal, but those majestic birds aren't the only attraction. Our trip will start at the Durham lock and aqueduct where there are so many stories to share from iron-making to Durham boats to caves occupied by Native Americans and bats. We will follow the towpath south past Trauger's Farm to the Gallows Run Aqueduct, named for either a notable resident or a failed suspender

incident, depending upon the source. At the aqueduct, both the river island and the Nockamixon Cliffs come into full view. The dramatic Cliffs rise straight up 300 feet from the Canal and Route 611. Waterfalls and wildflowers make them especially beautiful in the spring. In the travelogue that he wrote during his Delaware Canal excursion in 1886, Louis Comfort Tiffany gushed that the scenery at the Nockamixon Cliffs was the best of his trip and exceeded that of the Hudson River.

Our favorite nature photographer and birder Carole Mebus will accompany us on this walk and share her experiences of photodocumenting bald eagles at this location. She has captured images of eagles in flight, perched in trees, taking dips in the River, and, best of all, nesting. The photos of eaglets peeping from the nest have been highlights of the postings on the Friends' Facebook page for the past two years. We are hoping that this will be the third. If there are eagles to see, they will be at a distance, so bring your binoculars. Carole is a bird magnet, so we have high hopes.



*Bring your binoculars to view bald eagles.*

Lock 20, where we will envision the mill, bridge, and other buildings that once stood on this narrow site, will be the turnaround point for the walk. On our return trek, we will take in the northbound sights, and, perhaps, stop in at Trauger's for a treat.

This free walk will be held weather permitting. If in doubt, check for a message on the [www.fodc.org](http://www.fodc.org) homepage.

## Tuesday, May 12, 7:30 p.m. Unique and Rare Postcard Views of the Delaware Canal and Its Surroundings

*The program will be held in the auditorium of the Washington Crossing Historic Park Visitor Center, 1112 River Road, Washington Crossing, PA 18977.*

Plain and simple – you don't want to miss this one-time opportunity. Steven Cohen, a dedicated collector of the finest postcards, has allowed the Friends to create an illustrated program featuring his postcard views of the Delaware Canal, associated inns and stores, and Washington Crossing. If you've ever peered at something along the Canal and tried to imagine what it used to look like, Steven Cohen's postcards will cure your curiosity. His postcard views are enlightening, filled with character, often charming, and sometimes even mind-boggling. They are images that you aren't likely to find by Googling.

The "Golden Age of Postcards" occurred in America between 1905 and 1915. Postcard photographers took shots of everything and anything. Collecting the attractive cards was a form of entertainment, and people found them a convenient way to stay in touch with friends and relatives without the burden of excessive writing. The US Post Office spurred on their popularity by setting the postage

*(continued)*

# Calendar of Events

rate at one cent, “the penny postcard,” and, in 1913, 900 million postcards were mailed.

In the early 1900’s the Delaware Canal attracted postcard photographers. There were still mule-drawn canal boats plying the Canal, but business had slowed down considerably. Nature was having the chance to make the waterway and towpath look less like a well-worn commercial corridor. Photographers took the opportunity to capture a part of American life that would soon be gone and had benefit of portraying it in an increasingly attractive setting. After the close of business in 1931, the beauty of the Canal allowed it to remain as a popular subject for postcards, and the advent of New Hope’s mule-drawn barge ride for tourists guaranteed it.

During the presentation, Steven Cohen will share his knowledge about his cards and the joys and tribulations of collecting them.

Please join us for this very special opportunity that is being presented in partnership with the Washington Crossing Historic Park and the Friends of WCHP.



*Lock 8 in New Hope. A postcard photographed and distributed by Hampton Hayes.*

## **Thursday, May 14, 5:30 to 7:30 p.m.** **“Getting to Know All About Us”** **— A Town Meet and Greet**

*In the canal mural plaza next to the Locktender’s House, 145 South Main Street, New Hope, PA 18938*

Bring yourself – bring friends.

Join your fellow Friends for an evening of great conversation, good information and wine and hors d’oeuvres. No speeches are in store, but you will be able to meet the members of the Friends of the Delaware Canal Board of Directors and learn what’s in store for the Canal and the organization. Check out the site of the proposed new Delaware Canal State Park Visitor Centre. Walk upstairs to the towpath and Lock 11, the only lock on the Canal that is operable, then tour the Locktender’s House with its “Life at the Lock” exhibit.

Come enjoy yourselves and know that it’s good to be a Friend!

Please RSVP by May 7 for this free event. Call 215-862-2021 or e-mail [friends@fodc.org](mailto:friends@fodc.org).



*The mule mural at Locktender’s House Plaza and four other Canal scenes were painted by artist William Selesnick.*

## **Saturday, June 6, 10 a.m.** **Do the PA/NJ Canal Loop –** **A National Trails Day Bike Ride and Picnic**

*Meet at the Virginia Forrest Recreation Area, 3292 River Road (PA Route 32), New Hope, PA 18938. (1.3 miles north of Centre Bridge)*

Looping has become our tradition for National Trails Day. Once again, we’ll be doing our part to officially enjoy America’s vast network of recreational trails by biking on not one trail, but two. Join the Friends and the Delaware Canal State Park staff for a 10-mile bike ride on the towpath trails of both the Delaware Canal in Pennsylvania and the Delaware and Raritan Canal in New Jersey.

Bring your bike and let State Park Educator Ian Kindle lead you on a guided tour. The route will follow the Delaware Canal towpath south to New Hope, then cross over the river bridge to connect with the D&R towpath trail in Lambertville, NJ. From Lambertville, bicyclists will head north to Stockton, NJ, then cross that bridge back over to Pennsylvania for the trip back to the Virginia Forrest Recreation Area. A free picnic lunch of grilled hot dogs, chips, drinks, and dessert will be waiting there in the scenic canal and riverside picnic grove created by the Friends.

Please let us know if you are planning to attend by contacting the Friends at 215-862-2021 or [friends@fodc.org](mailto:friends@fodc.org).

## **Sunday, June 7, 12 to 2:30 p.m.** **“Getting to Know All About Us”** **— A Towpath Meet and Greet**

*Meet at the Virginia Forrest Recreation Area, 3292 River Road (PA Route 32), New Hope, PA 18938. (1.3 miles north of Centre Bridge)*

We’re headed out of town and to the country for the Friends’ second Meet and Greet. It will be held at the picnic grove that lies between the Canal towpath and the River at the Virginia Forrest Recreation Area. Come for a free picnic lunch and bring your friends to see what all the Canal and the Friends have to offer.

Join us in the picnic grove that exemplifies what the Friends can accomplish. The Recreation Area is named for Virginia Forrest, one of the citizen leaders in the effort to have the Canal designated as a National Historic Landmark in 1978. The picnic grove itself was created by the Friends over the past several years. Volunteers cleared trees, brush, and brambles to open the view out to the River and create enough space for picnic tables and grills, which the Friends’ purchased and had installed. Daffodils and Virginia bluebells were planted by volunteers to brighten the landscape in the spring.

During the picnic, the Friends’ Board of Directors will be happy to tell you all about what is in store for the Canal and our organization. Bring your bicycles or wear your walking shoes for your own Sunday afternoon Canal adventure afterwards.

Please RSVP by June 1 for this free event. Call 215-862-2021 or e-mail [friends@fodc.org](mailto:friends@fodc.org).

Thanks to the wicked weather in February, you can still catch two of the original three concerts.

## Hot Music/Cool Location

### Concerts with Dinners at the Home of Linda Kenyon

**Saturday, April 25**

**Tim Farrell with Pat Robinson**

Acoustic Guitarist and Pianist

“Through his mastery of the intricacies and melodic grace of fingerstyle guitar, Tim Farrell has created a sound that is to be felt as well as heard.” Farrell will play a guitar made by George Nakashima for several numbers.



**Saturday, May 23**

*Rescheduled from February 21*

**Avi Wisnia**

Vocalist and Pianist

“A great voice, an exciting stage presence, and songs finding inspiration in classic Brazilian bossa nova, acoustic American folk, 1950’s West Coast jazz, and contemporary pop. He plays the piano like he was born to it.”



Both will be held at 6 p.m.

3015 North Sungan Road

New Hope, PA 18938

At each you’ll enjoy two sets of music, wine, beer, hors d’oeuvres and an elegant dinner that would make Julia Child proud.

\$75 per person for each concert.

Make your reservations now for one or both of these very special evenings by calling 215-862-2021 or e-mailing friends@fodc.org. Please reserve early; a very limited number of seats remain.

## What's Next? *(continued from front page)*

With water comes the issue of better water retention. The State Park staff has been working on making waste gates more watertight and repairing leaks in walls this winter, and there is evidence that this has helped. The Friends are investigating various ways to prevent excessive loss of water via the overflows, particularly in the north. As for leaks, all watered canals have them, and they are part of the character of canals. The issue is to minimize them as much as reasonably possible.

The Park Manager’s Report also tells of new bridge and culvert projects. The Friends are providing input on design and are being vigilant.

All in all, things are get better and better.

## Towpath to Town

Years ago, a group of architects met in Yardley Borough to brainstorm ways to make that small town more inviting. The Delaware Canal, of course, was discussed as an asset, but the wake-up call came when one of the participants said “I ride this section of the Canal all the time, but I didn’t even know that there was a town here.”

From that comment came the notion that it would be mutually beneficial if Canal visitors and small town businesses knew more about each other. People who use the Canal want what a town has to offer – food, supplies, amenities, new places to explore. And towns are more than happy to fill those desires.

For two years, the Morrisville- Yardley Rotary Club has been working on an initiative to improve “towpath to town” communication. Rotary member Harold Long floated the idea of installing maps and directional signs along the towpath at street intersections in Morrisville and Yardley Boroughs. He formed a coalition of fellow Rotarians, municipal officials, organizations that promote the Canal, business groups and owners, designers, and contractors. The path to finding the best ways of communicating the “towpath to town” story was long, but the Rotarians persisted. In late 2014, two wayside interpretive signs were installed along the towpath – one in Yardley Borough and one in Morrisville Borough. Improvements to the pathway leading to the Canal at East College Avenue in Yardley were also accomplished.

The new wayside signs provide maps of each of the downtowns with symbols showing where amenities and supplies can be found. Also planned are small directional signs that will be erected at downtown intersections that show visitors how to get to the Canal towpath. A third part of the project is to encourage businesses and the municipalities to include the “towpath to town” information on their websites and develop promotions aimed at Canal visitors.

Congratulations and thanks to Morrisville-Yardley Rotarians Harold Long, Melanie Douty-Snipes, and Ted Fletcher for promoting and leading this forward-looking project. The Rotary is grateful to Landmark Towns of Bucks County, the Delaware and Lehigh National Heritage Corridor, the Friends of the Delaware Canal, Dr. Sandra “Kitty” Westrope and the Morrisville Business Association, Don Diretto and the Morrisville Economic Development Corporation, and former Mayor of Yardley Matt Sinberg for supporting the project with guidance, expertise, and funding. The Rotary is seeking donors to provide the financial assistance needed to complete this worthwhile effort.

Next time you’re riding or walking through Yardley and Morrisville watch for the new signs and venture downtown. There’s lots to discover.



Let the new “towpath to town” signs lead you to discover what’s downtown in Yardley and Morrisville Boroughs.

# Delaware Canal Clean-Up Day Work Areas

Saturday, April 11

The list of this year's work areas follows. The names of the Clean-Up Day Coordinators or Canal Tenders are included for each area, and contact information is given if additional workers are requested. **Help is especially needed in the highlighted areas.**

Please contact your local coordinator to volunteer.

## **Easton to Wy-Hit-Tuk Park**

Tom Grube, Canal Tender – 610-252-4064 tgrube7896@aol.com

## **Williams Twp.: Wy-Hit-Tuk Park to Mueller's Store**

Carole Mebus, Canal Tender

## **Riegelsville/ Upper Black Eddy: Mueller's Store to Indian Rock Inn**

Daniel Duffin, Canal Tender – danielduffin@verizon.net

## **Upper Black Eddy: Indian Rock to Homestead Store**

Roger Keller & UBEHPS, Canal Tenders – roger.keller@millburn.org

## **Upper Black Eddy: Berm Lane to Lodi**

Janice Armstrong and Steven Schlosser, Canal Tenders

## **Tinicum Twp.: Lodi to Uhlerstown**

Happy & Sam Shipley & Helen Chaitman, Canal Tenders

## **Tinicum Twp.: Uhlerstown to Lock 17**

Joe Cloran, Canal Tender & Appalachian Mountain Club, Del Val Chapter

## **Tinicum Twp.: Lock 17 to Bridge 3**

Marge & Tom Copenhagen, Canal Tenders

## **Tinicum Twp.: Bridge 3 to Bridge 2**

Peter Shaw, Canal Tender

## **Point Pleasant: Bridge 2 to Mountainside Inn**

Hank Goldberg, Canal Tender – 215-817-4915 hankjoelgoldberg@gmail.com

## **Point Pleasant: Mountainside Inn to Lock 12**

Sally Getchell & Nan Kirstein, Canal Tenders

## **Solebury Twp.: Lock 12 to Virginia Forrest Recreation Area**

Bill Rorer, Canal Tender

## **Solebury Twp.: Virginia Forrest to Centre Bridge**

Daniel Schwager, Canal Tender

## **Solebury Twp.: Centre Bridge to Phillips' Mill**

Robert McEwan, Canal Tender

## **Solebury Twp.: Phillips' Mill to Rabbit Run**

David & Vicky Child, Canal Tenders & Girl Scout Troop 26

## **New Hope: Rabbit Run to Lock 9**

Pam Can, Coordinator for the New Hope Garden Club  
John Manocchio, Canal Tender

## **New Hope: Lock 9 to Bowman's Hill**

Ray and Sara Altieri, Canal Tenders – 215-862-9943 sararayaltieri@aol.com

## **Solebury Twp./Upper Makefield Twp.: Bowman's Hill to Stoney Run Aqueduct**

Nora Schenk & Central Bucks Bicycle Club, Canal Tenders

## **Upper Makefield Twp.: Stoney Run Aqueduct to Mt. Eyre Road**

Gordon Heisler & Traditions Volunteers, Canal Tenders

## **Lower Makefield Twp./Yardley: Mt. Eyre Road to Afton Avenue**

Jeff Connell, Canal Tender

## **Yardley/Lower Makefield Twp.: Afton Ave. to Black Rock Road**

Ann & Keith Webb, Canal Tenders

## **Lower Makefield Twp./Morrisville: Black Rock Road to Trenton Avenue**

Morrisville-Yardley Area Rotary Club, Canal Tenders

## **Morrisville: Trenton Avenue to Bridge Street**

Ron Scheese, Coordinator – 215-295-2364 debscheese@aol.com

## **Morrisville: Palmer Street to Bridge Street**

Louise Wile & Mike Schwartz, Canal Tenders

## **Morrisville: Bridge Street to the Railroad Obstruction**

Lynn Vogel & Josh Gradwohl, Canal Tenders – lvogel419@comcast.net

## **Falls Twp.: Railroad Obstruction to Tyburn Road**

John Sikora – 215-321-0803 sikora@localnet.com

## **Falls Twp.: Tyburn Road to Falls Twp. Park**

Susan Taylor – 215-493-6625 susanhtaylor@verizon.net

## **Falls Twp.: Falls Twp. Park to Mill Creek Road**

Renee Thompson, Coordinator with Boy Scout Troop 46 – working on April 25

## **Falls Twp./Tullytown/Bristol Twp.: Mill Creek Road to Green Lane**

Dale Frazier, Ed Armstrong & GOAL (Greenbelt Overhaul Alliance of Levittown)

Contact: Jerry Taylor – 215-493-6625 jerry.taylor35@verizon.net

## **Bristol Borough: Green Lane to Lagoon Park**

Brett Webber, Coordinator - 215-840-2034 webber@spg3.com

## **Bristol Borough: Lagoon Park to Riverfront Park**

Mary Kehoe, Coordinator - 215-788-5918

jodi.marydave@verizon.net

Jose Acevado, Canal Tender

## Our Business and Institutional Members

Learn more about these Friends by clicking on their links at [www.fodc.org](http://www.fodc.org).

### Founder

Golden Pheasant Inn, Erwinna  
Tinicum Civic Association

### Benefactor

Rockwood Wealth Management, New Hope  
Walter's Nursery, Inc., Point Pleasant

### Patron

1740 House, Lumberville  
Acadia Mortgage, LLC, New Britain  
The Boat House, Lambertville  
Brett Webber Architects, P.C., Philadelphia and Erwinna  
Ellenoff, Underwood & Norman, Doylestown  
First Savings Bank of Perkasie  
Holly Hedge Estate, New Hope  
Newman & Company, Inc., Philadelphia  
Newtown Bicycle and Fitness  
Odell Painting, LLC, Ottsville  
The River House at Odette's, New Hope  
The Thompson Organization, Doylestown  
William B. Parry & Son, Ltd., Langhorne

### Member

Ahlum Gallery, Riegelsville  
Appalachian Mountain Club, Delaware Valley Chapter  
Borough of Morrisville  
**Bucks County Cottage on the Delaware, Yardley – NEW Member**  
Bucks County Riverboat & Trolley Companies, Upper Black Eddy  
Cramer Bakery, Yardley  
Dilly's Corner, Centre Bridge  
Edgar H. Denson, Post #79 American Legion, New Hope  
Donnelly Marketing Services Associates, LLC  
First National Bank & Trust Company of Newtown  
First Savings Insurance, New Britain  
T. Foster & Co., Inc., Yardley  
Fox Chase Bank, Lahaska  
Gratz Gallery & Conservation Studio, New Hope  
The Grundy Commons, Bristol  
Hobensack & Keller, Inc., New Hope  
Homestead General Store & Coffee Roasters, Upper Black Eddy  
La Chele Medical Aesthetics, New Hope  
Leisure Craft, Warrington  
Liberty Bell Wanderers, Philadelphia  
Logan Inn, New Hope  
McCaffrey's Markets, Yardley  
Mueller's General Store & Kitchen, Easton  
NAM Planning & Design, LLC, Lumberville  
John Paton, Inc., Doylestown  
Pete's Bike & Fitness Shoppe, Flemington, NJ  
Porches Bed & Breakfast, New Hope  
River Road Business Alliance, Erwinna  
Sand Castle Winery, Erwinna  
Shearer Penn Corp., Trenton, NJ  
The Stephan House Inn, New Hope  
Tinsman Bros., Inc., Lumberville  
Univest National Bank & Trust Co  
The UPS Store, New Hope  
Yardley Borough

## Postcards Have Lots of Stories to Tell



This "Photo Postcard" is postmarked April 20, 1950, 4 PM, South Amboy, N.J. Its caption is "Picturesque Scene at 'Cat & Fiddle Inn' Pt. Pleasant, PA." Today, we would call the location "Smithtown," not Point Pleasant, and the Cat & Fiddle Inn, which has a fascinating history all of its own, is not the building shown in the background. The Cat & Fiddle Inn, now a residence, lies to the left of the photo view.

The "picturesque" feature is the water wheel. Once an attraction along the Canal, it was powered by water running through the Canal bypass channel and used to generate electricity for the Cat & Fiddle Inn and other area buildings. Adding to the scene's charm are the two women paddling their canoe and the lower gate and bridge of Locks 15/16.

The postcard's story continues on its back. Addressed to Mrs. Robert Dowling, R.F. D. 2, Keokuck, Iowa, it was sent by "Mother." "Saw this today – {Someone's name that can't be deciphered} came at noon & took us for a drive & there we had dinner at a famous place – I ate deviled crab. Very good. Am giving {Another someone's name that can't be deciphered} a permanent tonite. Going to S. Amboy tomorrow – New York City Friday – Mac will be home Sat. – Love, Mother."

A tale of a drive along River Road with dinner, perhaps at the Black Bass Hotel, followed by getting gussied up for a trip to the big city.

Many more postcard views and stories will be shared at our program on May 12. See Calender of Events on page 3 for all the details.

## Suggestions, Please

The Friends' webmaster is in the midst of redesigning [www.fodc.org](http://www.fodc.org). The new site will be mobile device friendly, and the important content will be easier to find. More options will be available. The need to excessively scroll will be eliminated, and content will be updated.

If you have suggestions about what you would like included on the site or how you would like it to work, please share them by contacting 215-862-2021 or [friends@fodc.org](mailto:friends@fodc.org). If our users aren't pleased, we're not pleased.

## Friends of the Delaware Canal, Inc.

145 South Main Street  
New Hope, PA 18938



Nonprofit Org.  
US POSTAGE  
PAID  
Doylestown, PA  
Permit No. 640

## Ready for Daffodils?



This will be the third blooming season for the thousands of daffodils (and a few hyacinths) that were planted along the Delaware Canal by *Bucks Beautiful*.

## Welcome, New Friends

Susan & Eugene Behme and Family  
Bucks County Cottage on the Delaware  
Age Diedrick & Peter Zalud  
Tom Pelikan  
Scott Sheldon  
Elizabeth & Robert Wira  
Marcia Wittmann & Ronald Iannacone

## Coming to Your Real Mailbox

In May, you will be receiving your Friends of the Delaware Canal membership renewal request for the year 2015. Please support all that we do to improve the Canal.

We welcome checks because we save on credit card fees, but also are happy to receive your contribution via the online form that can be found by clicking on the *Renew Your Membership* link on the homepage of [www.fodc.org](http://www.fodc.org).



*A new Canal Loops rack card will be introduced on National Trails Day. A Friends' project funded by the D&L Trail Alliance, the rack card illustrates the six Delaware River bridges and two State Park trails that form the PA/NJ Loop Trail system. The mileage information is particularly helpful for trip planning.*