



WINTER 2023

*Friends  
of the  
Delaware  
Canal*

# Canal News

The Locktender's House  
145 South Main Street  
New Hope, PA 18938

Phone 215-862-2021

Email [friends@fodc.org](mailto:friends@fodc.org)

Website [www.fodc.org](http://www.fodc.org)

## Board of Directors

Brett Webber, *President*  
Laure Duval, *Vice President*  
Jack Torres, *Secretary*  
Lawrence Reinfeld, *Treasurer*  
Jeff Connell  
Joan Fullerton  
Gordon Heisler  
Pete Rosswaag  
Ken Standig

## Executive Director

Michael Ginder

## Our Mission

*The Friends of the Delaware Canal  
is an independent, non-profit  
organization working to restore,  
preserve, and improve the  
Delaware Canal and  
its surroundings.*

*Our primary goals are to ensure  
that the Canal is fully watered  
from Easton to Bristol and the  
towpath trail is useable over its  
entire length.*

*We embrace this mission in order  
to sustain a unique link to  
our heritage, protect beautiful and  
diverse natural areas, provide  
recreational and educational  
opportunities, and enable the  
Canal to serve as a community  
and economic asset.*

## BIRDS OF A FEATHER

### *Photographic Inspiration Along the Canal*



*Great Blue Heron and Bald Eagle, Carole Mebus*

Since the development of photography, this technology has been used to record important events, inspiring vistas, family gatherings, and simple pleasures. Photographs help give context to a place and time.

If you are familiar with our Facebook Page, you have seen many images provided by two outstanding photographers who generously share their talent with us weekly. Sometimes it is challenging to choose which image to post next.

Our photographer in the northern part of the towpath is Carole Mebus. She is a great photographer and has a deep knowledge of the flora and fauna of the region. Carole is exceptionally knowledgeable about birds, often using their bird calls to guide her way.

If you have tried to photograph a bird, you know it can be frustrating. The little creatures won't sit still. But Carole has a talent for finding and capturing birds in a unique and artistic way.

We are also blessed to have a photographer in the southern section of the towpath, Judy Greger. Judy will tell you she



*Swan on Icy Canal, Judy Greger*

has learned a great deal from Carole and has become an excellent photographer in her own right. Judy has a great talent for finding and capturing patterns made by nature. Whether it is ice crystals forming on the Canal or glistening autumn leaves, Judy finds beauty in the seemingly random order found around us.

## A Tale of Two Nature Lovers

Even though these women share a passion for nature and photography, their backgrounds are very different. Carole taught in the Easton School District for many years and became an environmental advocate after taking a summer course on Ecology at Lehigh University with Dr. Francis Trembly, the curriculum creator for the conservation major and head of the Ecology Department at Lehigh. At the time, he warned of DDT's dangers on the Bald Eagle populations. As Carole points out, in the 1970's, only two active bald eagle nests existed in Pennsylvania. Today, there are 300.

And while Carole spent a lot of time on walks and bird counts, she was not a pho-

*Continued on following page* ►

## OUR BUSINESS AND ORGANIZATION MEMBERS

Learn more about these  
Friends. Click on their links  
at [fodc.org](http://fodc.org).

### FOUNDER

Tinicum Civic Association

### BENEFACTOR

Battle Ground Creative,  
Yardley, PA

Hunterdon Hiking Club,  
Lebanon, NJ

Marcline Sheet Metal, Inc.

Jack Torres,

Coldwell Banker Hearthside

Brett Webber Architects,  
New Hope, PA

### PATRON

Benefit Watch, Inc., Yardley

Eiseman Construction Company,  
Inc.

Holly Hedge Estate, New Hope

Newtown Bicycle and Fitness,  
Newtown

William B. Parry & Son, Ltd.,  
Langhorne

### MEMBER

Acadia Mortgage

Ahlum Gallery, Riegelsville

Appalachian Mountain Club—  
Delaware Valley Chapter

AshLynn Distillery

Bucks County Cottage on the  
Delaware, Yardley

Delaware River Pedal  
and Paddle

Edgar H. Denson, Post #79

American Legion, New Hope

First National Bank & Trust  
Company of Newtown

T. Foster & Co., Inc., Yardley

Homestead General Store &  
Coffee Roasters, Upper Black  
Eddy

Liberty Bell Wanderers,  
Philadelphia

McCaffrey's Markets, Yardley

Pete's Bike & Fitness Shoppe,  
Flemington, NJ

Washington Crossing Insurance  
Group

## Birds Of A Feather *continued*



*Great Blue Herons Courting, Judy Greger*

tographer. That interest came when her husband gave her a camera for her retirement from teaching. From there, Carole has continued looking for just the right photograph.

Judy's photographic journey was a bit different. She and her husband, another avid conservationist nicknamed "Mr. Earth Day", were frequent visitors to the tow-path. Judy would take her point-and-shoot camera on walks and was very disappointed with the results. So much so that she decided to enroll in a photography class at Bucks County Community College. The teacher asked the students to bring their cameras to class, and when he saw what Judy had been using, he said simply "That is not a camera."

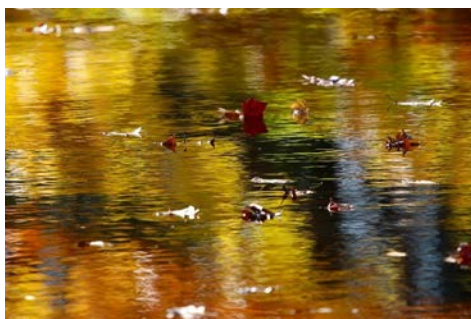
Since then, Judy has invested in better equipment, which has paid off. From Red-shouldered hawks to Blue dasher

dragonflies, Judy's images capture the true nature of her subjects.

### Trends in Bird Populations

Both Judy and Carole have noticed changes in the bird populations over the years. While it's true we have seen a growth in the number of bald eagles in Bucks County, other species have not fared as well. Carole has seen the disappearance of Evening Grosbeaks at her bird feeder. Purple finches seem to have been replaced by House finches. And birds that would typically call southern climes their home have become more common in Pennsylvania.

Judy has also noticed a change in the bird populations in the Washington Crossing area. She rarely sees cormorants or egrets; however, the Great Blue Heron populations and Red-shouldered hawks are doing quite well. Both photographers noted that Bluebirds, a favorite photographic



*Fall Reflections, Judy Greger*



*Locktender's House And Reflection at Ground Hog Lock, Carole Mebus*



subject, seem abundant. This may be due in part to the numerous bluebird houses that residents throughout the county have installed.



Woody's Camel Back Bridge in Snow, Carole Mebus

### Not Just Birds

When not capturing images of our avian neighbors, Carole and Judy love taking pictures of butterflies, dragonflies, and other canal-side creatures. Carole said she became a bit obsessed with

butterflies about ten years ago. One of her favorite spots to photograph is the zinnia patch at Trauger's Farm. The vibrant flowers in the field punctuate the beauty of the butterflies.

Carole and Judy may differ in their locale (remember, Bucks County is a very long county), however they share a similar approach to their photographic endeavors. Both rely on serendipity, the excitement of not knowing what you may see, and the expectation that something magical just might appear for the perfect shot.

### A Closing Note

we don't know if you have ever tried taking a picture of

a bird, but they can be the most difficult subjects. They fidget and flit. They can't seem to sit still. And the minute one appears to want to cooperate, some friends fly by, and off they all go. It takes patience and perseverance to become good at capturing these creatures in their habitat. So, hats off to Carole and Judy for their skill, artistry, and willingness to share with all of us.



Bald Eagle Pair, Carole Mebus

## SOURCES FOR THE NOVICE BIRDER IN ALL OF US



Carole Mebus

The Canal inspires artists of every kind. Painters, poets, and photographers have all tried to capture the beauty of this landscape.

If you are interested in becoming more knowledgeable about the birds found along the Canal and beyond, our photographers shared some resources you may want to consider.

### BIRD GUIDE/IDENTIFYING

Both Carole and Judy recommend the *The Crossley ID Guide: Eastern Birds* as one of the best bird-identifying resources. *The Sibley Guide to Birds* is another recognized resource.

If you are interested in bird calls (which is often how bird populations are counted), they recommend Merlin, the phone app developed by The Cornell Lab. The Cornell Lab of Ornithology website is a great source for information.

The Friends website has Flora and Fauna Galleries which feature many of the photographs we have shared over the years. [fodc.org/about-the-canal/photo-galleries/](http://fodc.org/about-the-canal/photo-galleries/)

### BIRD WALKS AND NATURE CENTERS

If you are a novice birder, you may want to join some of the local bird walks that take place throughout the county. Here are a few places that organize bird walks along with their contact information. Bucks County Audubon Society, New Hope, PA offers bird walks on

the first and third Saturdays throughout the year. [bcas.org/calendar/Bucks County Birders](http://bcas.org/calendar/Bucks%20County%20Birders), Churchville, PA: Monthly lectures (except December) as well as monthly birding trips to drivable locations.

Churchville Nature Center, Churchville, PA: They offer walks every Saturday morning from October through February 8AM–10AM and March through September from 7–9AM. [churchvillenaturecenter.org](http://churchvillenaturecenter.org)

Mariton Wildlife Sanctuary, Easton, PA: Check with the Preserve Manager on the availability of weekly walks. [natlands.org/mariton-weekly-bird-walks/](http://natlands.org/mariton-weekly-bird-walks/)

Peace Valley Park and Nature Center, Doylestown, PA: Along with events, the park offers a birding guide and binoculars to borrow. [peacevalleynaturecenter.org/trail-map](http://peacevalleynaturecenter.org/trail-map)

Silver Lake Nature Center, Bristol PA: Free Birding Walks, Saturday Mornings. See website for details: [silverlakenaturecenter.org/things-to-do/activitiesworkshopstrips/](http://silverlakenaturecenter.org/things-to-do/activitiesworkshopstrips/)

### PHOTOGRAPHY CLASSES

Both Carole and Judy have taken advantage of their local community colleges, Bucks County Community College and Northampton Community College.

# Upcoming Events



## LUNCH AND WALK AT THE NARROWS IN UPPER BLACK EDDY

*The Narrows Restaurant to Gallows Run Aqueduct*

**SATURDAY, MARCH 11**  
**10:00 AM TO 1:00 PM**

Take a stroll with us on the Canal and learn about the history of the Narrows Inn and the surrounding area as we walk to the Gallows Run Aqueduct. On this 2.6 Mile round-trip walk, we will pass by the Nockamixon Cliffs and Lynn Island, home to a nesting pair of Bald Eagles. Bring your binoculars to get a closer look at these magnificent creatures. Upon our return to the Narrows Restaurant (above), we will enjoy the comfort of their Canal Room while dining on a luncheon buffet menu of salads, soup, and gourmet sandwiches.

The cost is \$40 per person and is limited to 30 people. Reservations are required. Please visit the events page on our website to sign-up for this late winter gathering or email the Friends at friends@fodc.org.

## BRISTOL LUNCH & WALK

**WEDNESDAY, APRIL 16**  
**11:00 AM TO 2:30PM**

Discover Bristol Borough's rich canal history as we follow a series of interpretive signs from Mile 0 at the Delaware River to the scenic Lagoon by the Grundy Mill. On this guided walking tour, we'll find out about this pioneering industrial area. Our walk to the River will be via Radcliffe Street, the loveliest street in town where we will stop for lunch at the historic King George II Inn. Founded in 1681, the



King George II Inn (above) has been serving the community and travelers here since before the American Revolution. They have a reputation for exceptional food and drink presented in this beautifully maintained historic building.

The cost is \$40 per person and is limited to 25 people. Reservations are required. Please visit the events page on our website to sign-up for this walk or email us at friends@fodc.org.



*Dutchman's Breeches*

## SPRING FLOWERS WALKS IN APRIL

Spring flowers can be elusive. Bloodroot and Snow Drops hide beneath the cover of fall leaves. Dutchman's Breeches and Lesser Celandine poke through along the Canal Towpath. These flowers all have their own charms, fleeting though they may be. During the month of April, we have planned two Spring Flower pop-up walks. One will take in the southern end of the Canal, the other further north. More details on these pop-up walks will be provided via emails, a website posting, and on our Facebook page. Come join us as we scout out these spring ephemerals and enjoy the beauty of the Delaware Canal State Park.

## NEW HOPE CELEBRATES PRIDEFEST

**SATURDAY, MAY 20**  
**10:00 AM TO 5:00 PM**



*The Friends at New Hope Pridefest 2022*

Stop by the Locktender's House to view the end of the New Hope Pride-Fest and enjoy a daylong celebration in the historic town. The event will feature various vendors, games, food, and beverages. Of course, the Friends of the Delaware Canal will be there to cheer the parade and give tours of the Locktender's House located at 145 South Main Street, New Hope, PA. We hope you will stop by.

## NATIONAL TRAILS DAY BIKE OR WALK EVENT

**SATURDAY, JUNE 3**  
**10:00 AM TO 12:00 PM**

Two locations—Two ways to enjoy the Delaware Canal and Towpath on National Trails Day.

National Trails Day Bike Ride along the Towpath in Washington Crossing. Meet at the Park and Ride lot located at the intersection of Woodside and Taylorsville Roads next to the DRJTBC Executive Offices at 1199 Woodside Road, Yardley, PA 19067.

Join us for a 9.5-mile round-trip guided tour through the historic Washington Crossing Park and learn about some important landmarks along the way. On the return trip, we will ride over the new Scudder Falls Shared-use Path and take in the upstream views of the Delaware River. Limited to 20 cyclists.

**OR...** Hike in the historic town of New Hope along the towpath. Meet at the Solebury Canal Park parking lot located at Towpath Way, New Hope, PA 18938, just north of the Route 202 Bridge. This lovely 3.5-mile round-trip stroll through the historic village of New Hope will include a stop and tour of the Locktender's House. You will learn about some of the fascinating characters who helped form this community and the town's important role today.



# Mark Your Calendars for Canal Clean-Up Day

**CANAL CLEAN-UP DAY** is Saturday, April 1 from 9:00 AM to 12:00 PM. All 58.9 miles of the Delaware Canal are ready for the Friends' annual spring cleaning. Some sections of the Canal are closed for construction projects but we know our volunteers will do their best to get the open sections clean as a whistle.

As in years past, the Canal will be divided into approximately 25 Work Areas. We will assign volunteers (based on their preference) to a Coordinator who will help manage the logistics of the morning. We encourage both on-land and by-boat clean-ups. Last year, one of the kayakers helped retrieve a car seat from the water.

If you have questions or would like to

volunteer either as a worker or as a community coordinator, please call 215-862-2021 or e-mail [friends@fodc.org](mailto:friends@fodc.org). If you know of a group (civic, school, scout...) that may be able to participate, let us know.

The Clean-Up Day Work Areas are listed below with a particular need in the areas marked in RED. We will also include the details on our Events page at [fodc.org/event/canal-clean-up-day-2023/](http://fodc.org/event/canal-clean-up-day-2023/) on the Friends of the Delaware Canal Facebook page, and in our early March e-mail campaign. Last year more than 100 volunteers helped out on Clean-Up Day. This year, let's try for 150. Many hands make light work!

- Bristol Riverfront Park to Bristol Lagoon Park
- Bristol Lagoon to Green Lane
- Green Lane to Edgely Avenue
- Edgely Avenue to Levittown Shopping Center
- Levittown Shopping Center to Mill Creek Road
- Mill Creek Road to Wheatshaf Road
- Wheatshaf Road to Tyburn
- Tyburn Road Detour South End to Conrail Tunnel
- Conrail RR Tunnel to Bridge Street
- Rabbit Run Bridge to Phillips' Mill
- Virginia Forrest Recreation Area to Lock 12
- Wy-Hit-Tuk Park to Easton

## Winter On The Canal

Life on the canal was not an easy one in the best weather. But what was it like in the winter? Several of our Friends asked the question. So, in the spirit of trying to be a source of information, useful and otherwise, we did a bit of research.

Most Canal boatmen and their families would take to solid ground in the winter. Many **canallers** had established homesteads on land, or they would move into the closest town or shanty nearby. According to some oral histories, there were people, mostly young men, who might spend the colder months on the boat, but that was an exception, not the rule.

People who worked on the canal could not afford to remain idle all winter. Some men were employed to repair boats and other equipment in anticipation of a fresh start in spring. Others may have gone to the coal mines or worked cutting ice for refrigeration. Still others would work on repairing the canal itself.

In the winter, sections of the canal were drained. Boats that were not housed in a boatyard would be positioned in the middle of the canal. As the water level dropped, the canal boats would rest in the bottom of the canal prism where they would stay until spring.

The ice could damage boats that became frozen in place, so every effort was made to store them safely for the winter. Some accounts describe how ice breakers were drawn through the canal to release boats that were stuck. This task took a great deal of manpower as well as mule-power. In freezing temperatures, it was an arduous and dangerous process.

Today, a frozen canal no longer traps boats or provides ice. Instead, the canal in winter provides free fun for kids of all ages. Ice skating and hockey are two favorite pastimes. And you often see cross-country skiers using the snowy towpath as they enjoy a relaxing and level glide.

So, be sure to take advantage of the Delaware Canal State Park in winter. Enjoy the serenity of the towpath covered in snow. Or, if skating is your passion, look for a solidly frozen spot to practice your figure-eights. And remember, always bring a friend or two.

*Hope to see you out there!*



Canal Ice Harvesting demonstration. Photo credit: Joshua Groh/LebTown



Ice Hockey on the frozen canal in Upper Black Eddy



Cross Country Skiing on the towpath

# REDISCOVERING THE TOWPATH:

## *The Legacy of William Francis Taylor*



a chronology of the life and times of Taylor and his contribution to preserving the Delaware Canal and Towpath.

### Who was William Francis Taylor?

Before the Friends of the Delaware Canal came into being, there was the Delaware Valley Protective Association, and William Francis Taylor was its first president. Formed in 1933, the DVPA encouraged the state to restore and maintain the Canal. Later, the organization was also responsible for securing an essential historic national landmark designation, protecting the Canal and towpath for generations to come.

In 1939, Taylor launched a magazine titled *Towpath Magazine*, a monthly publication focused on preserving “the beauty and value of the valley.” He wrote numerous articles focused on nature and the environment. Notably, the significant beauty of the Delaware River Valley landscape and that of the canals—both the Delaware Canal and the Delaware and Raritan Canal—were frequent subject matter in his writing and his artwork, calling attention to the importance of their preservation.

### An Artist of Distinction

As an artist, William F. Taylor was considered part of the New Hope Impressionist School. Taylor was a student of William Lathrop and became well known for his landscapes and depiction of Washington Crossing the Delaware. His works can be found at the Corcoran Gallery and the Metropolitan Museum of Art.

William F. Taylor was born in Hamilton, Ontario, Canada, where he started his art career as a lithographer and illustrator. In 1905 he moved to New York and studied with John Sloan at the Art Students League. Taylor had swiftly excelled in the illustration field and was appointed art director of the *New York Journal* in 1908. He held this position for several years while also working as a freelance artist and illustrator for national publications such as *Harpers* and *Century* magazines. For many years, Taylor worked for the A.G. Spalding Sporting Goods Company, creating the original art for most of their advertisements. Around 1910, while visiting Phillips Mill, Taylor met fellow artist Mary Smith Perkins, who

was studying with his friend William Lathrop. A relationship developed, and in 1913, they married and moved to Lumberville, Pennsylvania. In that same year, Taylor became a naturalized citizen.

Living on the Delaware River, a stone's throw away from the home of Daniel Garber, Taylor was surrounded by a wealth of subjects for his art. His paintings possess a distinct and appealing style, employing a bright, fresh palette using both a palette knife and brush to ap-

ply his paints. Painting the majority of his work within several miles of his home, Taylor also painted on Long Island in New York, and out west in the Yosemite Valley. However, he felt his strength as a painter was his ability to capture the beauty of Bucks County.

Taylor was a member of the Salmagundi Club, the Phillips Mill Community Association, the New Hope Artists and Writers Association, the Delaware Valley Protective Association, and the Asbury Park Society of Fine Art.

He exhibited at the Province of Ontario (1902 medal), the National Academy of Design, the Society of Independent Artists (1917), the Salmagundi Club (1924, 1927, and 1932 prizes), the Philadelphia Art Club (1924 prize), the Philadelphia Art Alliance (Purchase Prize), and the Phillips Mill.

*Continued on following page* ►



*Canal with Barge* by William Francis Taylor, courtesy of Freeman's, 2022



### A Persistent Preservationist

William F. Taylor is remembered to-day not only for his fine impressionist landscape paintings but also for his organizing and writing abilities. In October 1928, he was appointed to head a subscription committee that would ultimately be responsible for purchasing the Phillips Mill for use as an exhibition space and community center. In 1963, he published a history of the mill. Additionally, he published several articles on local artists. Taylor remained active until his death at age eighty-seven.



William Francis Taylor's home (Photo by Shuvaev)

exhibit. We will send an email with the exhibit opening date in the near future.

Taylor's love of history and preservation was also evident in his purchase and restoration of the Cuttalossa Inn. He acquired the 180-year-old building in 1930. He also owned, lived in, and rented rooms at the Hard Times Tavern.

### Let's Celebrate a Life of Art and Impact

We hope you will join us for the opening of the William F. Taylor

## PARK MANAGER'S REPORT

By Brian Heath, Park Manager,  
Delaware Canal State Park

**Leadership:** A new administration is now in Harrisburg, led by the recently elected governor, Josh Shapiro. We were happy to learn that Governor Shapiro nominated Secretary Cindy Adams Dunn to continue to lead DCNR.

**Budget:** Over \$5 million of the Bureau's \$60 million allocation of Federal American Rescue Plan Act Funding (ARPA) is coming to the canal in projects that are in design or soon to be under design:

- Lumberville Aqueduct—Design
- High Falls Sub-Canal Culvert—Design
- Towpath Bypass over Inlet at New Hope—Design
- Spahrs Bridge Substructure Rehab—Design
- Bowman's Wastegate Repair—Bidding
- Repair of Flood Damage (Easton Inlet to Coffeetown)—Bidding

**Staffing:** We are planning an on-site hiring event for early April at Buckstone Farm. We are looking to fill several vacancies, including:

- Two entry level wage maintenance positions
- Two salaried DCNR Rangers
- One wage DCNR Ranger/Trainee

If you know anyone interested in any of these positions, please ask them to contact the Park Office at 610-982-5560. The Park is working on a residency waiver to open the candidate pool up to non-commonwealth residents. All of these jobs are posted at [employment.pa.gov](http://employment.pa.gov).

**New Equipment:** The Southern maintenance crew received a new backhoe. This delivery was delayed due to supply issues. This backhoe and a recently purchased tractor/mower will increase the efficiency and safety of the staff, while supporting the upkeep of the park.

### Project updates:

- A significant sinkhole at the wastegate near the Golden Pheasant Inn has re-developed. This problem appeared last year and was repaired. Since that time, it resurfaced at double the size. Crews excavated the site, identified the root cause, and completed the repairs.
- The pump at Center Bridge, which provides water through New Hope, is offline indefinitely. A generous funding source for the monthly utility fee for the operation of this pump is no longer viable, and by policy, the Park does not pay this fee. Anyone interested in providing funding for this pump should contact the Friends of the Delaware Canal directly.
- Rt 532 bridge in Washington Crossing was damaged by a vehicle in early December. PennDOT is responsible for completing repairs; however, they have not provided a timeline for completion. Please use caution in this area and obey posted signage.
- The Park Administration continues to work toward obtaining a grant from NOAA, through DEP, to help develop a plan to address invasive vegetation within the southern end of the Park that falls in the Delaware River Coastal Zone. Once developed and implemented, this will help remove undesirable vegetation from the Park.

### New E-Bike Policy Outlined

The DCNR approved a new E-Bike Policy after receiving input from constituents and Park users. The policy states that department staff will treat E-Bikes the same as human-powered bikes, provided the E-Bikes meet the following criteria:

- Weigh no more than 100 pounds
- Do not exceed 20 mph using the motor functionality
- Are equipped with a motor no more than 750 watts
- Are equipped with fully functional, operable pedals

~~Safety and courtesy should always be a priority when biking. Remember to follow these E-Bike Safety and Etiquette Tips:~~

- ~~• Know the type and specifications of the device you're riding and where you can ride it.~~
- ~~• Maintain safe speeds at all times, consider trail and weather conditions, and always be cognizant of other users along the trail.~~
- ~~• Stay to the right, pass on the left.~~
- ~~• Let other trail users know you are coming—give a friendly greeting.~~
- ~~• Limit distractions, don't impair your hearing (i.e., by wearing headphones or ear buds).~~
- ~~• Obey all trail and road signs.~~
- ~~• Slow down in congested areas.~~
- ~~• If you're on wheels, yield to pedestrians.~~
- ~~• Helmets are required by law for persons under the age of 12 and are recommended for bicyclists of all ages.~~
- ~~• Maintain single file when passing or being passed. And don't block the trail.~~
- ~~• Expect the unexpected. Humans and animals can be unpredictable.~~

If you would like to review the policy online, please visit [www.dcnr.pa.gov/Pages/EBikePolicy.aspx](http://www.dcnr.pa.gov/Pages/EBikePolicy.aspx)



## WELCOME NEW FRIENDS



Beale

Phil & Laurie Brandau

Kevin Carroll

Bree Eingorn

Patricia Freeland &

Robert Platten

Cynthia Fusco

Pam Galusha

Michele Gasiorowski, MD

Robert Greacen

William Hirsch

Mary & Tom Javian

Erno Komjati

Daniel Krystkiewicz

Matthew & Lisa Kulka

Jason Macrie

Mary Malcolm

James Matsoukas

Philip McCarthy &

Matthew Simonetti

Andrea Moise

Daniel Murphy

Ned Pollack

David & Alix Pott

Jeffrey & Patti Robl

John Shortall

Nancy & Jay Style

Gene Underwood

Nelson & Kathy Widell

**New Business Member**

Battle Ground Creative

## At the Board Table

2022 Year in Review  
New Recognition, Milestones, and Events



We held our Friends of the Delaware Canal Annual meeting virtually on Tuesday, November 15, 2022. Nearly 90 people registered for the event, and we had great questions and input from those who attended.

FODC Board President Brett Webber kicked off the meeting. David Madl, Regional Park Manager, and Brian Heath, Park Manager, provided Delaware Canal State Park updates.

FODC Executive Director Michael Ginder presented a 2022 Year in Review, including an inaugural showing of our new video, "The Friends Celebrating 40 years" which you can view on our website. Larry Reinfeld, FODC Treasurer, followed with a Financial Report including a balance sheet and expenditure analysis.

Earlier in the year, we engaged a landscape design firm to help us define our project focus over the next ten years. At our meeting we received an update from Studio Bryan Hanes and staff on the progress of the 2032 Plan which included a review of their research and results.

Honored with a Special Recognition were Michele Becci and Jay Freeo. Michele and Jay have been active committee members since joining the Friends. This year, their contributions were many. They assisted with the set-up and management of the Delaware Canal Music Festival; cleaned and cleared the garden and rock wall at the Locktender's House. And they are members of the Fundraising and A.R.M committees.

Of course, we conducted some much-needed board business, including elections. The membership re-elected board members Joan Fullerton, Gordon Heisler, Ken Standig, and Jack Torres to additional two-year terms. Later at the first Board Meeting in 2023, the Officers of the Board were also re-elected. They include Brett Webber, Board President; Laure Duval, Board Vice President; Larry Reinfeld, Treasurer; and Jack Torres, Secretary.

Brett Webber ended the Annual Meeting with closing comments outlining our primary focus for 2023. "A commitment to planning and preserving while looking for new opportunities to educate and engage the public."

The Board looks forward to a productive 2023 and always welcomes your questions, input, and help!

## 2022 ANNUAL YEAR-END APPEAL

We want to thank all of the Friends who participated in this year's annual appeal. You made it a great success. We surpassed our goal. As stewards of your donations, we promise to invest your money in projects that help protect and preserve our beloved Canal and Towpath.

We are looking forward to a productive 2023 because of you.

**THANK YOU!**

