



FRIENDS OF THE DELAWARE CANAL CANAL NEWS

Four Restored – One in Progress – One to Go

When the Commonwealth of Pennsylvania dug the 58.9-mile-long Delaware Canal between 1827 and 1831, it was responsible for connecting the private properties that the new ditch divided. Thus, more than 100 bridges were built, most of which were camelback bridges. A camelback bridge is a modified Queen Post Truss bridge, perfectly adapted for canal use since it has a hump in the middle, which allowed canal boats to more easily pass underneath.

Today the successors to the original camelback bridges are the Delaware Canal's signature structures exemplifying the waterway's history. Over the years, changes in vehicle types and traffic requirements have caused most of the bridge to be replaced with larger, hefty versions, but six authentic camelbacks still remain.

For over a decade, the Friends have been on a quest to ensure that these last six genuine pieces of history are restored. Not only are they vital factors to the Canal's National Historic Landmark status, but their delicate design guides new construction. The Friends are directly responsible for the successful restoration of three of the camelbacks and were instrumental in the preservation of the fourth. Our volunteers perform continuing maintenance, such as painting and vegetation removal.

Two camelbacks are still in need of work – Woody's Bridge south of Easton and Spahr's Bridge in Bridgeton Township. This fall, the stars aligned in favor of Woody's. It needed significant repairs so that it could continue to carry pedestrians, but was not so deteriorated that it needed a complete rebuild.

The Friends have partnered with the Delaware Canal State Park to get the job done **now** while the water is out of the Canal for other maintenance projects. Fundraising to cover the \$31,800 labor cost is underway, and the Park has committed to pay for the materials. In the spirit of getting the job done this winter, Randy Myer of R-Shell Exteriors, Lancaster, PA is already at work (Randy is a seasoned camelback restoration contractor having already completed the work on the Hazzard's, Thompson-Neely, and Goat Farm bridges.)

So far, the Friends have raised \$20,000 for this project thanks to generous contributors who want the Canal's history preserved. Now we need your help to raise the balance of the needed funds. You may contribute on-line at www.fodc.org or send a check to Friends of the Delaware Canal, 145 South Main Street, New Hope, PA.

Please help restore Woody's Bridge, the best example of how camelback bridges once were – delicate, graceful, utilitarian, and very beautiful.



Contractor Randy Myer is determined to get the restoration of Woody's Camelback Bridge done this winter.

Get on the CAT List

The Friends' Canal Action Team (CAT) has been tackling a wide variety of projects since it was formed in the winter of 2014. Everything from removing vegetation from stone walls to bridge painting to replacing interpretive signs to pulling out cattails is fair game.

As 2017 begins, we would like to reinvigorate our list of volunteers who are interested in working on the CAT.

Who:

Anyone who wants to and can be physically active. Especially needed are people who like to paint bridges and those who would like to lead a crew.

When:

CAT projects can be undertaken both on weekdays and weekends. Usually they take no longer than 3-4 hours.

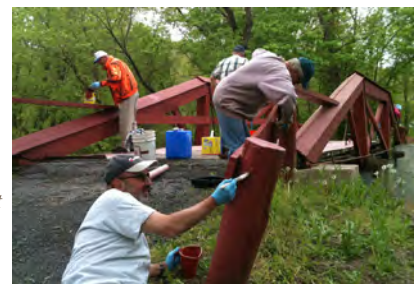
Where:

Work sites are determined by the urgency of the job and the location and number of available volunteers.

The Plan:

If you want to be part of CAT, please call 215-862-2021 or e-mail friends@fodc.org and give us your contact info and your preferred work locations (north, central, south). When a work day is developed, an e-mail notice containing the job details is sent to all the prospective volunteers about two weeks prior. Those who can help on a particular project just respond to the e-mail and show up on the appointed day.

Be a part of CAT! Get things done along the Canal and enjoy working with your fellow Friends.



CAT at work.



Friends of the Delaware Canal

145 South Main Street
New Hope, PA 18938
Phone & Fax: 215-862-2021
Email: friends@fodc.org
Internet: www.fodc.org

Board of Directors

Brett Webber, *President*
Pam Can, *Vice-President*
Lynn Vogel, *Secretary*
Peter Sperry, *Treasurer*
Jeff Connell
Judith Franlin
Joan Fullerton
Bob Ketler
Eileen O'Neil
Peter Rosswaag
David Schaeffer
Bill West

Advisory Board

Randy Apgar
Allen Black
Jack Donohue
William Farkas
William Getchell
James Greenwood
David Heckler
Pearl Mintzer
Betty Orlemann
Will Rivinus
David Strawbridge

Executive Director

Susan Taylor

Mission

The Friends of the Delaware Canal is an independent, non-profit organization working to restore, preserve, and improve the Delaware Canal and its surroundings. Our primary goals are to ensure that the Canal is fully-watered from Easton to Bristol and the towpath trail is useable over its entire length. We embrace this mission in order to sustain a unique link to our heritage, protect beautiful and diverse natural areas, provide recreational and educational opportunities, and enable the Canal to serve as a community and economic asset.

Park Manager's Report

by Josh Swartley

My first seven months at the Canal have been exciting and full of challenges and successes. We wrapped up 2016 with several wall repair projects. During the maintenance drawdown in October we hired several contractors to make repairs to multiple walls that failed and collapsed along the Canal. Wall repairs have been completed at Lock 5 in Yardley, along Mile Post 21 in the Bowman's Hill area, adjacent to Lock 22/23 in the Teddy Roosevelt Recreation Area, and at Woody's Bridge in the Raubsville area. Also during the drawdown, Park and engineering staff were able to inspect several areas of the Canal and develop plans for future projects and maintenance work. Park maintenance crews were also busy repointing walls and waste gates, dredging, fixing additional sink holes, and working on many other preventative maintenance projects. To close out 2016, the river/weather finally cooperated with us by providing enough rain and higher river levels to start re-watering the southern end of the canal during the middle of December.

2017 will bring its challenges and successes as well. We will be starting the New

Year with several projects already in progress. First, in partnership with the Friends, an experienced contractor has been hired to make repairs to Woody's Bridge in the Raubsville area. We have had another wall collapse in the Kintnersville area by Lehnberg Road. A contractor has already been mobilized, and repairs to this wall have begun. Finally, the Park has discovered two new sinkholes in the northern section of the Park - one in Smithtown between Bridges 2 and 3 and the second in Williams Township just north of the Easton sewage treatment plant. Repairs to these sinkholes will be forthcoming once the weather decides to cooperate with us.

Also, work on the Lower Limeport Bridge in Solebury Township has begun and is expected to continue through April. We have another bridge project on the horizon as well. The final design work and permitting is being done for the Phillips' Mill Bridge. We are expecting this project to go out to bid late this winter and to be ready for construction later this spring. Enjoy the Canal!

At the Annual Meeting

Our members just kept coming through the doors of the David Library of the American Revolution on November 15. The Rose Gallery, where the covered dish dinner was held, was filled with people and great food; and everyone was thankful for the spacious seating and high quality audio visual equipment upstairs in Stone Hall where our presentations were held. We are so appreciative of the Library's willingness to share their facilities with the Friends.

We were pleased to have a wonderful turnout from the PA Department of Conservation and Natural Resources. With us were:

John Hallas, Director of the Bureau of State Parks, who gave a summary of DCNR's accomplishments and plans

Jason Zimmerman, Manager of Park Region 4

Josh Swartley, Delaware Canal State Park Manager

Bethany Hare, Delaware Canal State Park Assistant Manager

Gene Gelfand, Engineer with DCNR's Bureau of Facility Design and Construction, who was honored for his dedication to the preservation and improvement of the Canal and its historic structures, particularly its camelback bridges

David Kemmerer, retired Director of the Bureau of State Parks

The after-dinner presentation included some Friends' Board of Directors business. Retiring Board member **Stephanie Garomon** was thanked for all her efforts on behalf of our organization, especially in terms of organizing fundraising events. **Pam Can, Judy Franlin, Joan Fullerton, Lynn Vogel, and David Schaeffer** were all elected to additional Board terms.

The Annual Meeting is always a great time to get together with old and new friends, take stock of the year's activities, and gear up for the coming year. And that's just what we did.

At its January meeting, the Friends' Board of Directors elected its officers for 2017. Serving will be:

Brett Webber – President

Pam Can – Vice-President

Lynn Vogel – Secretary

Peter Sperry – Treasurer

As always, the Board welcomes your participation and input.

Calendar of Events

Saturday, January 14
10 a.m.

Tromp Along the Towpath

Meet at the Delaware Canal State Park Headquarters, 11 Lodi Hill Road, Upper Black Eddy, PA 18972

Will it be a cold, snowy winter? That is the question. Regardless of whether the landscape is white or brown, join us for a 4-mile adventure tromping along the towpath through one of the most interesting stretches of the Canal.

Katie Martens, Delaware Canal State Park Educator, and Susan Taylor will lead the way on a scenic roundtrip hike between the Park Office and historic Uhlerstown, reputed to be one of the best preserved canal hamlets in America.

If there is snow on the ground, participants are asked to bring their own snowshoes. Snowshoes may also be borrowed from the Park. Ten pairs of adult snowshoes and two pairs of children's (and, perhaps, more) will be available free of charge on a first-come, first-serve basis. Wearing waterproof insulated boots with wool or synthetic socks with wicking liners will keep your toes toasty. Dressing in non-cotton layers is a good idea, too.

Hot chocolate, tea and cookies will be waiting in the Park Office at the end of the adventure.

The Tromp Along the Towpath is free and will be held weather-permitting. It will be cancelled in the event of rain or dangerous driving conditions. Check the homepage of www.fodc.org for a Go/No Go message that will be posted by 7 a.m. on January 14.



Will 2017 be the year when we take to the towpath in snowshoes?



Sunday, January 29
2 p.m.

Canal and River Walk A Lambertville-New Hope Winter Festival Event

Meet by the caboose behind the Lambertville Station Restaurant, 11 Bridge Street, Lambertville, NJ 08530

It's our 20th year! Join the Friends of the Delaware Canal and the Delaware & Raritan Canal Watch for a guided history and nature tour along both of our neighboring towpaths. This popular event is just one of the many activities to be held during the Lambertville-New Hope Winter Festival.

The first stop on this two-mile walk will be the D&R Feeder Canal lift lock and outlet lock to learn how canal boats once crossed the Delaware River via a cable ferry. We'll then follow the path of the mule teams of old as we hike through Lambertville and cross the river bridge into New Hope.

Heading west, the Delaware Canal towpath will soon be found. We'll trek southward through town to Lock 11 and the Locktender's House. Hot chocolate with marshmallows and other goodies will be waiting inside. For those who want to walk and see a bit more, we'll venture a short distance south to the New Hope inlet to take in the many historic sites and the glorious vistas of the River and wing dam.

This Winter Festival Walk is free and will be held weather and conditions permitting.



Friday, February 10
5-7:30 p.m.
**Twilight and Full Moon
Trek on the Towpath**

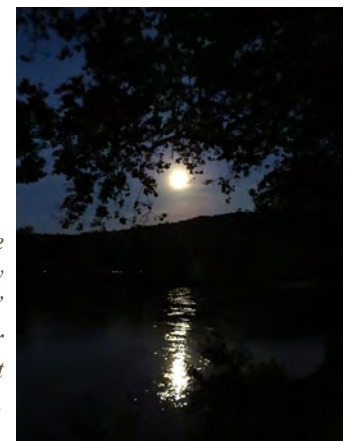
Meet near the General Sullivan Picnic Pavilion in the northern section of Washington Crossing Historic Park. Use the park entrance on River Road opposite Aquetong Road in New Hope, and then travel over the Canal to the parking area between the Canal and the River.

Take this special opportunity to experience the magic of twilight along the Canal and the spectacle of a rising full moon at Wells' Falls on the Delaware River in New Hope. Join us for this moderately-paced, four-mile roundtrip hike as the sun sets on a crisp February evening. On our way along the towpath from Bowman's Hill to Lock 11 in New Hope, we'll listen for owls and keep an eye out for other nocturnal critters.

At Wells' Falls, we'll take in the grandeur of the River and watch the "Snow Moon" rise above the slopes of New Jersey. On our way northward, we'll see Locks 8, 9, 10 and the canal outlet to the River. Waiting at Lock 11 and the Locktender's House, the Friends' headquarters, will be hot beverages, snacks, and a place to warm up before heading back to our starting point.

Please dress warmly in non-cotton layers, wear sturdy shoes, and bring a flashlight or headlamp, just in case.

There is no charge for the Twilight Trek, and it will be held weather-permitting. It will be cancelled in the event of rain, a total cloud cover or dangerous driving conditions. Check the homepage of www.fodc.org for a Go/No Go message that will be posted by 11 a.m. on February 10.



See the "Snow Moon" rise on our Twilight Trek.

Calendar of Events

Sunday, February 19 1 – 3 p.m. Tromp Along the Towpath II

Meet in the parking lot across from the former Mountainside Inn in Point Pleasant. The Google map address is 4728 River Road, New Hope, PA 18938.

We are determined to enjoy a snowy day on the Canal, so we've scheduled a second Tromp this season. Katie Martens and Susan Taylor will lead a scenic, 3-mile roundtrip hike, this time between the villages of Point Pleasant and Lumberville. Both places have fascinating histories, and the intriguing Devil's Half Acre lies midway.

Please see the January 14 write-up about snowshoes.

We'll end our outing with hot chocolate and homemade cookies.

The Tromp Along the Towpath is free and will be held weather-permitting. It will be cancelled in the event of rain or dangerous driving conditions. Check the homepage of www.fodc.org for a Go/No Go message that will be posted by 8 a.m. on February 19.

Crossing Historic Park are partnering to present this spring's program. It's a compilation of Carole's favorite images with particular emphasis on those that she's taken in 2016. Seeing the photos is just part of the treat. Carole will also tell the stories behind the shots and maybe share some of that magic.

We promise that you will leave the show awed by Carole's photos and appreciative of the excellent and diverse habitat that the Delaware Canal provides.



Carole is an accomplished birder, and Eastern Bluebirds are her very favorite, so you may see a few during the program.

Tuesday, March 14 7:30 p.m. "Carole's Favorites" Photos of Nature Along the Canal

The presentation will be held in the auditorium of the Washington Crossing Historic Park Visitor Center, 1112 River Road, Washington Crossing, PA 18977.

Most of the current photos that you see on the Friends of the Delaware Canal Facebook page, in this newsletter, and on www.fodc.org are taken by Carole Mebus, a Raubsville resident and dedicated Canal Tender. Since taking up photography after retirement, Carole has shot thousands of amazing images during her almost daily walks along the towpath. Her good eye, a strong camera lens, and a sprinkling of magic are key to her accomplishments. (The "magic" component is not to be dismissed. How else can one explain why critters pose perfectly for Carole.)

The Friends are so honored that Carole has chosen to share her photos with us so that we can share them with you. In that spirit, the Friends and the Friends of the Washington

Saturday, March 25 10:30 a.m. Lunch and Walk

Meet at the Virginia Forrest Recreation Area, 3292 River Road (PA Route 32), New Hope, PA 18938. (1.3 miles north of Centre Bridge)

It's been a long time since we've had a Lunch and Walk in the central section of the Canal, so this year we're starting at Mile Marker 29, as close you can park to the middle of the Canal's 58.9-mile length. Our four-mile walk will take us from the Virginia Forrest Recreation Area and nearby Hendrick Island to the Lumberville General Store and back.

There are lots of stories to be told along the way. Did you know that the Park Recreation Area is named after a woman who was honored for her efforts to conserve not only the Canal, but also the American Bald Eagle? This honor seems so appropriate now that there is an abundance of eagles living along this stretch of the Canal and River. We may be able to see bald eagles nesting, so don't forget to bring your binoculars.

We'll find out about the Cuttalousa Valley, which once hummed (and smoked and creaked) with industry, but now is one of the most beautiful spots in Bucks County. In Lumberville, the tales of lumbering and illustrious citizens will be told.

After checking out reconstructed Lock 12, we'll head to the historic Lumberville General Store for lunch. Choose from a selection of soups, sandwiches, and salads.

After lunch, we will venture out onto the pedestrian bridge over the River, then head south on the towpath to our starting point.

Lunch and Walk Donation - \$25 per person. Reservations are required. Please make them early because seating is limited. Call 215-862-2021 or e-mail friends@fodc.org no later than March 17. If it is snowing or raining, we won't be walking, but we will meet at the General Store at noon for lunch and lively conversation.



Lunch will be served at the historic Lumberville General Store.

Mark Your Calendar Canal Clean-Up Day Saturday, April 8

All 58.9 miles of the Canal are ready and waiting for the Friends' annual spring cleaning, and we're hoping for good weather.

Holding with tradition, the Canal will be divided into approximately 25 Work Areas, and volunteer coordinators will handle the logistics for each of the Areas. On-land and by-boat clean-ups are encouraged. If you have questions or would like to volunteer either as a worker or as a community coordinator, please call 215-862-2021 or e-mail friends@fodc.org. If you know of a new group that may be able to participate, please let us know.

The Clean-Up Day Work Areas will be listed in the spring issue of *Canal News*, posted on www.fodc.org, and sent out to our e-mail contact list.

Our Business and Institutional Members

Learn more about these Friends by clicking on their links at www.fodc.org.

Founder

Tinicum Civic Association

Benefactor

Holly Hedge Estate, New Hope
Hunterdon Hiking Club, Hunterdon County, NJ
Rockwood Wealth Management, New Hope
Walter's Nursery, Inc., Point Pleasant

Patron

1740 House, Lumberville
Acadia Mortgage, LLC, New Britain
Brett Webber Architects, P.C., Philadelphia and Erwinna
Ellenoff, Underwood & Norman, Doylestown
George E. Michael & Co., New Hope
Golden Pheasant Inn, Erwinna
John Paton, Inc. Doylestown
Newtown Bicycle and Fitness
Penn Community Bank, Perkasie
Scannapieco Development Corporation, New Hope
Tinsman Bros., Inc., Lumberville
William B. Parry & Son, Ltd., Langhorne

Member

Ahlum Gallery, Riegelsville
Appalachian Mountain Club, Delaware Valley Chapter
Borough of Morrisville
Bucks County Cottage on the Delaware, Yardley
Dilly's Corner, Centre Bridge
Edgar H. Denson, Post #79 American Legion, New Hope
Donnelly Marketing Services Associates, LLC
Eiseman Roofing & Exterior Construction, New Britain
First National Bank & Trust Company of Newtown
First Savings Insurance, New Britain
T. Foster & Co., Inc., Yardley
Gratz Gallery & Conservation Studio, New Hope
The Grundy Commons, Bristol
Hobensack & Keller, Inc., New Hope
Homestead General Store & Coffee Roasters, Upper Black Eddy
La Chele Medical Aesthetics, New Hope
Leisure Craft, Warrington
Liberty Bell Wanderers, Philadelphia
Lions Cross Country Booster Club, New Hope
Logan Inn, New Hope
McCaffrey's Markets, Yardley
Mueller's General Store & Kitchen, Easton
NAM Planning & Design, LLC, Lumberville
OMNIA Group Architects, Hatboro
Pete's Bike & Fitness Shoppe, Flemington, NJ
Porches Bed & Breakfast, New Hope
Sand Castle Winery, Erwinna
Univest National Bank & Trust Co
The UPS Store, New Hope
Washington Crossing Insurance Group
Wild Birds Unlimited, Buckingham
Yardley Borough



Hot Music/Cool Location

A Concert and Dinner at the Home of Linda Kenyon
Saturday, March 18, 6 p.m.
3015 North Sугan Road
New Hope, PA 18938

This year you'll have only one chance to indulge in our incomparable music and dining experience at Linda Kenyon's home. Don't miss it.

You'll be spoiled with two sets of music, wine, beer, hors d'oeuvres, and an elegant dinner that would make Julia Child proud. There will be a full array of desserts, too. The Rhinoceri Trio will set the beat for the evening with Brendan Cooney on piano, Chris Coyle on acoustic and electric bass, and Gregg Mervine on drums. (A horn player just may arrive to be a Plus 1.)

Their sound is a combination of jazz, classical, and world music; and their repertoire ranges from Debussy to Hank Williams to Ethiopian jazz. As disparate as those combinations seem, it is truly a reflection of the musical journeys these musicians have made.

Brendan Cooney started out as a classical pianist, but then gravitated to jazz piano. Meanwhile, he began to play banjo with a West Philly country and bluegrass band, which played weekly at an anarchist speakeasy located above an Ethiopian bar. Gregg Mervine was a rock drummer, who moved to Philly to study jazz in college, and then ended up as an in-demand klezmer drummer while studying philosophy at Temple. He also started the West Philadelphia Orchestra, a party-starting Balkan brass band before moving to Brazil on an ethnomusicological mission.

In the Rhinoceri Trio all the contradictions are given full sail and the passage can be exhilarating.

Donation - \$75 per person for the concert and dinner. Please make your reservations early for this special evening by calling 215-862-2021 or e-mailing friends@fodc.org.



The Rhinoceri Trio at play.

Welcome, New Friends

Rafael Aviles
Geoffrey Berwind
David Crane and Karen Kreller
Judy Greger
Elsa Grootzinger
John and Justin Lacombe
Joie and Roger Maloof
Rhoda Marshall

Wayne Martorelli
Kevin McClay
Catherine Nicholson
Judy Olukotun
Mark Smith
Kathryn Surmay and Paul Kenny
Susan Weida

Friends of the Delaware Canal — 2016 Members

We thank those who demonstrated their support with membership contributions in 2016.

CANAL INVESTOR

Carl and Pam Asplundh
James Clare & Kathy Schroeder
Joseph and Judith Franlin
John Goodfellow
Fred and Carole Mebus
Catherine Nicholson
Robert and Eileen O'Neil
Peter and Barbara Sperry

CANAL SUPERINTENDENT

Robert and Pamela Byers
Tom and Katherine Cadwallader
Stephen and Pam Can
Anthony and Susan Cino
Jeff and Robin Connell
Dr. and Mrs. Donald Levinson
Joe and Mary Lou Quinlan
Scott A. and Anne P. Reines
Peter and Joyce Rosswaag
Janet L.K. Ruttenberg
Sam and Happy Shipley
J. Brian Stalter
Nancy Stegens

BOAT BUILDER

Dan Abuhoff & Tamsen Granger
James Alden
Richard Beaumont & Deborah C. Hinckley
Scott and Jana Bovino
William and Patricia Clark
Tony and Chris D'Angelo
John and Susan Eichert
Linda Frye
David and Constance Gillis
Gale Griffiths & Laurie Sauter
Shirley W. Dozor, Harry T. & Shirley W. Dozor Foundation
Robert and Cynthia Hendrickson
Bruce Herzog & Nancy McCarthy
J. Robert and Barbara Hillier
Doro Kerr
Robert and Jennifer Ketler
Marvin and Merle Levy
Ming Ying Liu & Bob Congleton
Amy Lyons & Donna Deely
Richard Magruder & Diane B. Glossman
Mr. and Mrs. Craig D. Miller
Raymond and Kathleen Note
Dr. and Mrs. Stanley Plotkin
Scott Reynolds
Lisa Sandler
Chuck and Sue Scholer
Anthony and Kathleen Scotto
Peter and Diana Shaw
Collin and Rebecca Stuart
Stuart Tross & Linda Kneidinger
Darrell and Vickie Tuomari
Vernon Wiegand

TOLL COLLECTOR

Peter Alexander
Robert and Joan Anderson
Bill and Barbara Austin
Rafael Aviles
Jim and Sharon Barnes
Peter Barrows & Sarah Huntington
Peter Batts & Karyn Person
George and Peace Baxter
Carol Beam

James and Grace Betts
Wolfgang and Veronica Bogacz
Michael Borovicka
Ernie and Dee Dee Bowman
Harold G. Brown
Boyce and Karen Budd
Marie and Rodger Bushnell
Jane Celentano
Joe Chiesa
David and Lynda Collins
Margaret Copenhaver
Alan Cohen & Karen Kaplowitz
Peter Cross
Chris and Carol Czumbil
Karen Daddona
James and Bannia Darrow
Henry and Carylann Dauber
Jeffrey Davis
Jack and Claire Donohue
Brian and Connie Dow
Alan and Anne Dresser
Laure Duval
Fred and Barbara Ehmann
Robert Fallon
William Farkas
Robert J. Ferrari & Dorothy Parker
Steven and Ricki Fisher
Patrick and Mary Fowles
Joseph and Marjorie Francht
Dennis Gerhart
William and Sally Getchell
Dr. Elaine Gibbs
Eugene and Wendy Gladston
Hank Goldberg & Susan Goodrich
Susan Grady
Paul Graebener & Louisa Bartok
Dr. and Mrs. R. Douglas Hahn
Ray Hamilton & Dorothy Judd
Russell and Vici Hamm
Hal and Sheila Handel
Graham Harriman & Scott Kirkham
Bill and Peggy Hecht
David and Susan Heckler
Gordon and Barbara Heisler
Nina Heitz
Monica Hemmers & Stephen Heimann
Phil and Dian Herman
Adolf and Patty Herst
Edwin Hild
Douglas Hillman
John and Amy Hoffman
Terrence and Roberta Hurley
Ronald Iannacone & Marcia Wittmann
Jane Johnson
Michael Jugovich
Mayor Larry Keller
E.M. Kennedy
Chris and Cathy Kerr
Alan and Gail Keim
Graham and Michele Kinsman
Charles Klein, III
Ken Knowles
Tom and Nancy Kovacevich
Ron and Louise Lawter
Joyce White Lee
Edward and Alexandra Leydon
Dennis Lonergan
Bill and Linda Low
Steven Lowe
Tom Lurz & Sheree Cote
Brian and Amelie Mann
David Markman
Peter and Elizabeth McCue

Robert and Maria McEwan
Kathleen Meier & David Perry
Martin and Shirley Mersky
Anthony vanEyck Miller
Michael and Liza Mirisola
Cliff and Karen Montgomery
Lois Mousley
Patrick Mulhern
John and Bernice Nay
James and Sharon Nelson
Mary Kay Nicolo
Ron Novak & Pat Lesko
Dave Ormsby
Peter and Anne Paige
Mario Palena, Jr.
Blake and Jan Parry
John and Kathie Parry
Mr. and Mrs. John Payne
Shirlee Prescott
Richard and Elinor Pressel
James and Constance Putnam
Dorsey Reading
Christine Reid
Ethel Reinard
George and Lisa Righter
Ken and Linda Roberts
Valerie Rose
Gaetan Rouleau
Al and Cindy Ruenes
Steve Saddlemire
Anthony and Karen Salvati
Doug Sardo & Gil Wechsler
David and Patricia Schaeffer
Ernest Schaible, Jr.
Susan Schaub
Harris and Patricia Schwartz
Paul Sebelist
Paul Servantes
Dr. and Mrs. Bennett M. Shapiro
Scott Sheldon
Greg Silk
Thomas Simonet
Leon Skowronski & Kathy Lafferty
Thom Smyth
Leona Sohmers
Anne Stephano
The Honorable and Mrs. David Strawbridge
Drew Sujet
Kathryn L. Surmay & Paul Kenny
Dr. and Mrs. David Svahn
Thane and Dana Tagg
Charles F. Tarr
Greg and Liza Taylor
Jerry and Susan Taylor
Alice M. Thorpe
William Tomai & John Eric Sebesta
Ken and Elaine Van Aken
John and Mary Vanasek
Robin Vannotte
Robert and Alice Vernon
Lynn Vogel & Josh Gradwohl
Sam and Elizabeth Warshawer
Elizabeth Weaver
Keith and Ann Webb
Maureen Williams
Richard and Sandra Wortzel
Peter Zalud & Age Diedrick
Roy Ziegler
Barry and Sallie Ziff
Bill Zimmerman
Mitchell Zuckerman

LOCKTENDER

Joseph and Pam Agnello
Joan Aichele
Nancy Allen
Ray and Sara Altieri
Carolyn Ambler, Geri Delevich,
Lucianne DiLeo
Ken Andrews
Janice Armstrong & Stephen Schlosser
Joseph and Rebecca Bachinsky
Andrew and Frances Barkocoy
Geoffrey Berwind
June Bierman
Harry and Sylvia Bingham
Joel and Estelle Bloom
Paul and Marianne Bogen
Paul Bradley
Kerry and Laura Brandt
Barbara Brown
Norman and Cheryl Bubenheimer
Pamela Burrell & Peter Gatto
M. U. Calis & S. O'Connor
Bill Carmean & Nancy Ross
Richard and Elizabeth Carrick
Geri Chmiel
Bill and Joanne Clark
Lowell and Karen Cloete
Tim and Millena Coffey
Dr. and Mrs. Neil M. Cohen
Roger and Sue Crook
Malcolm and Elaine Crooks
Mary Jo Crowley & Michael Shoup
James Curry
Jon and Donna Cushing
Dominick and Janet DeCaprio
Bern and Joan Deichmann
Harold DiGiacomo
Reverend Edward Dillon
Patricia Donnelly
John and Linda Drustrup
David and Rene Dubnanski
Jane Edmondson
John Ehling
Eric Epstein
Bill and Susan Firestone
Brian and Marianne Fluehr
Nick and Sharon Forte
Bill and Donna Fox
James and Cecilia Fresco
Joan Fullerton & Joe Guasconi
Mr. and Mrs. Walter Gaibler
The Gallo Family
Anne Gannon
Ron and Connie Gering
Colin and Maureen Gibson
Alan Glickman
Alfred and Emily Glossbrenner
Grace Godshalk
Eric and Julie Goldman
Amy and Matthew Goldstein
Mark Goresky
Robert Graul
Judith Greger
Bob Happ & Beth Taylor
Kathy Hausman & Jim Hill
Ned and Linda Heindel
Joseph Hochreiter & Eileen Wachtman
David and Barbara Hodes
Mr. Michael and Dr. Sandy Homel
Robert and Anita Howard
Garry and Judy Hyatt
Patricia Jud
Patricia Kennedy

Sarah Jane Kennedy
Mike and Sharon Killough
Blythe Kropf
Neil and Marion Kyde
John and Justin Lacombe
Bob and Lynn Lang
Deborah Lang
Bill and Joyce Lathbury
Donna Lee
Richard Lee
Jay and Sheryl Leeb
Michael Lemme & Paul Bressi
Ron Levine
Harold Long
Stephen Lowe
Roger and Joie Maloof
John Manocchio
Eleanor Marcus
Peter and Kerstin Marion
Rhoda Marshall
Herman and Marcienne Mattleman
Kevin McClay
Candace McCormick
Joseph McGrath
John McHale
Senator Charles McIlhinney
Maureen McIlvaine
Barbara McLenahan
Janice McVan
Lance and Pat Mervine
Joe and Joyce Mettalia
Beverly Mikuriya, MD
Chuck and Pearl Mintzer
Len Morawski
Donald and Barbara Morris
Dina Murray
Robert Myers
Bob and Sarah-Jane Nedl
David Nice
Donna O'Hara
Judy Olukotun
Thomas and Gail Orr
Greg and Ellen Oviatt
Carol Parker & Nick Trinh
Edward and Diana Pazicky
Judy Peiffer
Faelton and Pauline Perkins
Ken and Megan Peterson
Joseph Piccolo & Patricia Crowley
David Crane and Karen Kreller
Ron Portman
Christina Preis
Vince and Diane Profy
Janice Pruch
Rod and Nancy Pursell
Lawrence Reinfeld
Jim and Diana Resek
Jeffrey Revak
Barbara Ricker
Alan Ritchie
Mayor Dave Rivella
Willis Rivinus & Dickie Ann Boal
Jeanette Ruano
Nancy Russell
Benita Ryan
Clara Salati
Tobias Sank
Patricia Savadove
Marilyn Schaumburg
Randall and Nora Schenk
Jim Searing & Gayle Goodman
David Seidman
John Seng
Rich and Kathy Shaginaw
Ronald Sheetz
Matt Sinberg & Sue Schneck
Gurney and Faith Sloan
Mark Smith
Ron. and Nan Smolow
Drew Sonntag

Faye Sorhage
Steven Spatz
Susan Sperry
Bob and Kathleen Stalgaitis
David and Barbara Stoller
Peter N. Stone
Robert and Lynn Stoner
Michael and Linda Tadlock
Yair Talmi & Janis Eckhart
Jack and Karen Taylor
Alan and Deb Thompson
Robert and Barbara Tiffany
Terry Tracy
William and Joan Trainer
Donna Trenchard
Lorraine Tucker
Karl and Elizabeth Varnai
Jannina Viscardi
Dr. Jason Vodicka & Derek
Cressman
Andrew and Anna Ward
Irwin Weiner & Jay Johnson
Bill West
Tuck Wilson & Jean Schaeffer
Jeffrey Witte
Robert Woertendyke & Ellen
Sussman
Greg and Jane Wuerstle
Marc Zaharchuk
Judy Zipkin-Grasso & Michael
Grasso

MULE TENDER

Stuart and Theresa Abromovitz
Theresa Alexander
Bill and Jane Antheil
Kathryn A. Auerbach
Bob and Beth Auwarter
Alan Bader
Mark Baldwin
Rowland Barker
Robert and Linda Barth
Ruth Beck
Eric Beckhusen
Eugene and Susan Behme
Lawrence and Karen Belli
Michael Bird
Pamela Blake & Steven Cohen
Carl Bowden
Ted and Nancy Bremble
Dennis Brown
Ethel Brown
Susan Bunkin
Richard and Janice Burgh
James and Patricia Burns
Paul and Roberta Butler
Bill and Ros Cahill
Milton Cannan
Jeffrey Carroll and family
Mark and Mary Cherepko
Edward Cohen
Vincent Colletti
Richard and Cheryl Coniglio
Barbara Crossette
Mary Ditzler
Daniel and Dorothy Dombroski
Ruth Dorn
Patricia Dreyfus
Daniel Duffin
Joyce Duffy
Michael and Alberta Duncan
Richard Einstein
David and Mindy Emerson
Linda G. Erdman
Diana Evans
Richard T. Evans
Vaughn and Loraine Faber
Maria Fell
Victor Fiori
Cindy Friel
Grover Friend

Dr. Gabriel Garber
Stephanie Garomon
Neysa Garrett
Robert Gearing
Velvet Gerace
Sue Ann Rainey Gillen
Kate Goelz
Debra Wolf Goldstein
Mary Gordon
Scott and Lynn Gordon
David and Susan Gray
Elizabeth Griffin
Elsa Groetzinger
Charles Gullage
Patricia Haneman
Geraldine Happ
Jonathan Hendler
Charles Henry
Thomas Henry
Jenza Hesington
Ty Hodanish
Andy Holyoak
Martin Hoski
Uwe Hundskopf
John and Pat Hutchings
Les and Pam Isbrandt
Phil Jaeger
Donald and Roseann Kamp
Debra R. Keast
Mary and Jodi Kehoe
Dr. Roger Keller & Nancy Small
Chris Kelly
Peggy Kennedy
Woody and Jo Kiel
Nan Kirstein
Frederick Klein
Dr. and Mrs. Harold G. Kohn
Janet Lynda Kraemer
Linda Kandel Kuehl & Daniel
Wilson
Lizzy Kuhlken
Mary LaBarr
William Lee
Jane Leroe
Jack and Lois Lichstein
Joseph Linus
David Long
C. J. Lonoff
Jeff and Judy Looney
Ed Los
Paul Lynn
Paul and Carol Marshall
Wayne Martorelli
Melvyn Mason
Lynne Mastrelli
William Mathis
Dr. and Mrs. Dennis Maziarz
Loren McAlister
Doug McCray
Dave McGlynn
Meg McSweeney
Jerry and Doreen Megna
Pat Miiller
Kent and Suzanne Milstead
Tim and Dominique Mitchell
Danielle Arnold Moffly
Corrine Monesmith
Karl Mousley
John A. and Kathleen F. Mueller
Mark and Holly Nemiroff
George Nise
William Novak
Anne O'Connell
Michael Olszewski
Jennifer Paquette & Jason Shore
Jonathan Perlstein
Mike and Peggy Probst
Hal Pschunder
Purdum Family
David Raab

Alexandra Radbil
William Rauh
Carol A. Rautenstrauch
Ron Ricci & Mariann McKee
Melissa Rider
Joe and Mary Ridgway
Lillian V. Ritts
Mary Roberts
Jean Rollo
Tom and Joanne Romalewski
William H. Rorer
Barbara Ross
Herbert Ross
Diane Saadtjian
Joan Sampson
Bryce and Jane Sanders
Richard and Elizabeth Scheier
Robert and Eileen Schmidt
Brian Schmult & Barbara Goun
Joanie Schultz
Russell and Elsie Schuss
Daniel Schwager
Buddy and Susan Schwartz
Marion Schwartz
Jurgen Schweickhardt
Jim and Holly Segletes
Rich and Gail Seidner
Klaus and Joyce Sens
Mary Shafer
Joyce Shanahan
B. B. Shapiro & Charlotte Freeman
Richard and Mary Sherwood
Babs Simon
Cynthia Sinclair
Marguerite J. Smith
Kent Smith
Peggy Smith
Leslie Ross Stephens
Thomas Stinnett
Gary Swangler
Sylvia Tach
Dene and Sheila Taylor
Charles and Laura Thomforde
Phin and Marjorie Tuthill
Lawrence Vogel
Sandra Wallander
Arleen Warren
Curt Wary
Joan E. Webber
Susan Weida
Kevin Weidling
Lou White
Patricia Whitman
Mr. and Mrs. Donald Whitney
Jonathan and Sue Wiedorn
Betty M. Wise
The Wismer Family
Edith Woodman
Don and Mary Woodruff
Rich and Kathy Worthington
David and Susan Yates
James D. Young, III
Vincent Zito

BOATMAN

Sheila Blische
Carl Elston, Jr.
Sophia Feller
David Hewitt
Rosemary Holland
James B. Kahn, M.D. & Carol
Wierbowski
David Klaus
David Kuczorski
James Lefkowitz
Ruth Leidy
Harriet Schwartz
Michael and Anke Stieglitz
Francie Trager & Shila Moarefi
Debbie Wright
Mr. and Mrs. Melvin Yasner

Friends of the Delaware Canal, Inc.

145 South Main Street
New Hope, PA 18938



Nonprofit Org.
US POSTAGE
PAID
Doylestown, PA
Permit No. 640

A Link to the Canal's Past

Movies taken of the Delaware Canal during the first half of the 20th century and interviews with men and women who worked on the Canal are now available for you to see and hear on your computer, iPad, or phone. These treasures are easily accessible thanks to the efforts of the Solebury Township Historical Society and the cooperation of the National Canal Museum in Easton.

Two members of the Society, who are also dedicated members of the Friends of the Delaware Canal, collaborated with the National Canal Museum to preserve the Museum's cassette and film collection. Robert McEwan, Society Vice President and archivist, and Elizabeth Carrick, the Society's web consultant have devoted a tremendous number of hours to evaluating the collection and publishing the best of it on the Solebury Township Historical Society website www.soleburyhistory.org.

To share these valuable pieces of history with more canallers, the Society has very generously invited the Friends to place a link to the material on our website www.fodc.org. The movies and the interviews can be found in THE CANAL section.

So, if you've wondered what the Delaware Canal was like when mule teams pulled coal-laden boats to market, you can now find out by just clicking.



The Solebury Township Historical Society's new collection of videos and oral histories contains images of Canal sites that have disappeared. This is a John Anderson photograph of Lock 10 in New Hope, now covered by South Main Street.

2017 Is Off to a Good Start!

To all of you – members, supporters, and Facebook friends – who so generously answered our year-end appeal to replenish the Friends' Canal Improvement Fund and pay for the restoration of Woody's Camelback Bridge – **Thank You!**