



FRIENDS OF THE DELAWARE CANAL CANAL NEWS

Woody's Camelback Bridge is Restored. Thank you!

'Twas the week before Christmas when contractor Randy Myer of R-Shell Exteriors arrived at the Woody's Camelback Bridge work site south of Easton. Almost single-handedly, Randy assembled the cribbing to support the bridge structure, dismantled the deteriorated parts, and then undertook the carpentry and metal work necessary for the restoration. He worked while frigid winds blew and the ground was snow-covered all to accomplish his goal of having the job done by mid-February.

Woody's Camelback Bridge is now the fifth of the six authentic camelback bridges to be restored. Randy did a masterful job! The work has been inspected and approved by the State engineers, and all that remains to be done is to stain the wood when it has aged a bit and the weather is warmer.

The restoration of this historic camelback bridge would not have been possible without the financial support of those Friends who made contributions specifically for this project during the Year-End Appeal. Our organization was able to pay for the labor costs solely using new contributions designated for Woody's. The PA Department of Conservation and Natural Resources paid for the materials.

The Friends gratefully thank the 37 supporters of Woody's Bridge, of whom the following made major donations:

- The Goodfellow Fund
- William Farkas
- Robin and Jeff Connell
- Judy and Joe Franlin
- Carole and Fred Mebus
- Barbara and Peter Sperry
- Anonymous

AND thanks to the unprecedented generosity of all of our Year-End contributors, the Canal Improvement Fund now has a balance that beckons another project.

A historic, picturesque, and useful camelback bridge has been preserved and funds are available to tackle another improvement initiative. May the coming year continue on this positive track.



Final inspection day at Woody's Camelback Bridge. From left to right – Randy Myer, contractor; Gene Gelfand, DCNR engineer and guardian of camelbacks; Bilal Baqai, DCNR engineer; Josh Swartley, Delaware Canal State Park Manager.



Woody's Camelback Bridge is waiting for the volunteers to arrive with their stain and brushes this spring.



In the Month of May Come Flowers

And your Friends of the Delaware Canal membership renewal request for the year 2017. Please support all that we do to improve the Canal.

We welcome checks because we save on credit card fees, but are also happy to have you renew online at www.fodc.org. Just click on Join in the main menu, then navigate to the page **Renew Membership**.



Friends of the Delaware Canal

145 South Main Street
New Hope, PA 18938
Phone & Fax: 215-862-2021
Email: friends@fodc.org
Internet: www.fodc.org

Board of Directors

Brett Webber, *President*
Pam Can, *Vice-President*
Lynn Vogel, *Secretary*
Peter Sperry, *Treasurer*
Jeff Connell
Judith Franlin
Joan Fullerton
Bob Ketler
Eileen O'Neil
Peter Rosswaag
David Schaeffer

Advisory Board

Randy Apgar
Allen Black
Jack Donohue
William Farkas
William Getchell
James Greenwood
David Heckler
Pearl Mintzer
Betty Orlemann
Will Rivinus
David Strawbridge

Executive Director

Susan Taylor

Mission

The Friends of the Delaware Canal is an independent, non-profit organization working to restore, preserve, and improve the Delaware Canal and its surroundings. Our primary goals are to ensure that the Canal is fully-watered from Easton to Bristol and the towpath trail is useable over its entire length. We embrace this mission in order to sustain a unique link to our heritage, protect beautiful and diverse natural areas, provide recreational and educational opportunities, and enable the Canal to serve as a community and economic asset.

Park Manager's Report

by Josh Swartley

Well, I thought we were going to have an early spring this year, but Mother Nature proved me wrong. Nothing like a blizzard to test the endurance of our park maintenance crew.

The Lower Limeport Bridge replacement project in Solebury Township is progressing, but the contractor ran into a problem with the east bridge abutment. It was found that the abutment was built on top of rubble and loose soil instead of a concrete foundation. The contractor has demolished the old abutment and will be building a new concrete abutment with a concrete foundation to remedy the issue.

Design work still continues for the Phillips' Mill bridge project, also in Solebury Township. The design consultant is still working with PennDOT to work through some issues and obtain a Highway Occupancy Permit.

Since my last Park Manager's Report, we have had another stone wall collapse in New Hope by the Waterworks Condominium

Association property. This collapse was a little larger than some of our previous wall repairs, but the Park was able to hire a contractor and make the repairs within a few weeks.

The Woody's Camelback Bridge restoration and repair work has been completed. Thank you to the Friends of Delaware Canal for all of your help and fundraising efforts to make this project happen.

Finally, we have several sinkholes in the northern section of the canal that need to be repaired before we can start filling the Canal from the Lehigh River. The sinkholes are located by the Easton Sewage Treatment Plant, by the Blue Moon in Raubsville, between Bridges 2 & 3 in Smithtown, and one just south of the Virginia Forrest Recreation Area. Our plan is to begin these repairs as soon as weather permits, and the towpath is in suitable condition to operate heavy equipment. We will then start adding water from north to south as we complete repairs.

Enjoy the Canal!

At the Board Table

Board member **Bill West** left the Board in February because of his extended out-of-state time commitments. Always enthusiastic about Friends' fund-raising events, Bill was a key player in making them happen. He was also tuned into what was happening along Canal because of his frequent and far-reaching walks along the towpath. Bill, we'll miss you!

All the members of the Board of Directors welcome your assistance, questions, and advice. If you are interested in learning more about becoming involved in a Friends' committee or becoming a member of the Board, please contact President Brett Webber at bw@bwadesign.com

New Signs with Improved Maps

The PA/NJ Canal Loop Trail system is marked with 12 signs located near to where the towpaths and the river bridges intersect. The signs have been providing information to park visitors for more than 13 years. Age has caught up with the fiberglass imbedment panels, and most now are deteriorated to the point that they cannot be read.

A grant from the **Bucks County Conference and Visitors Bureau (Visit Bucks County)** has enabled the Friends to have new panels fabricated and to purchase a sign base to replace one that was damaged by a truck. The new panels will feature a new and improved map that provides more information about distances and graphics that are easily understood.

The PA/NJ Canal Loop Trails are increasingly popular because of their convenience. We thank Visit Bucks County for helping us to keep canal visitors informed and entice them to return to discover even more intriguing places.

Sharing the Towpath Trail

With Spring comes the return of lots of visitors to the Delaware Canal towpath. Please be mindful of your fellow Park users.



Calendar of Events

Saturday, April 8, 9 a.m. Canal Clean-Up Day

Usually the Friends' Canal Clean-Up Day is promoted with "Give the Canal its annual spring cleaning!" This year it may well be more accurate to change "spring" to "summer," given that the daffodils were already blooming in early March. But regardless of the season, the Canal always benefits from a spruce-up, and Canal Clean-Up Day is the official time to do it.

The list of the 32 **Work Areas** from Easton to Bristol is shown on pages 6 and 7. On the list are sections that will be handled by Canal Tenders and sections that will be tackled by community coordinators and organizations. Those Tenders and coordinators who have requested additional volunteer help are highlighted in yellow.



This year we're hoping for good weather and lots of on-land and in-water volunteers.

To volunteer, please review the list and choose one of the highlighted locations, then call or e-mail the Canal Tender or Coordinator to offer your assistance. Your Tender or Coordinator will let you know where to meet, what to bring, and answer any questions that you may have.

If your favorite section isn't among the highlighted areas, please don't hesitate to give the Tender or Coordinator a hand. Nearly all will be out on the towpath on Clean-Up Day.

So pull out your work gloves and come out on April 8 to get the Canal ready for the busy season. If you have a canoe or kayak, bring it along. The trash that accumulates on the berm side of the Canal is most easily retrieved from a boat, and, sometimes, it's the only way to get to it.

As always, individual clean-up efforts are always welcome – anytime, anywhere.

Date: ????? Time: Early evening Spring Peeper Walk

Meet at the Black Rock Road Picnic Area at the intersection of Black Rock Road and the Canal, Yardley, PA 19067

So much has been said about the sounds that spring peepers make that we decided to arrange a pop-up walk along the Canal to hear them for ourselves.

Spring peepers are tiny amphibians that are about the 1 inch long. Well camouflaged and rarely seen, they are tan or brown in color with dark lines that form an X on their backs. They are nocturnal creatures hiding from their many predators during the day and emerging at night to feed on ants, flies and spiders.

Spring is the peepers' time in the spotlight. It's mating time, and the amorous males make a lot of noise to attract females. The Spring Peeper chorus can go on each evening for a week or more.

One can't predict exactly when the peepers will be peeping, so we'll set the date and time for the 1-1/2 mile-long Spring Peeper Walk when they give us a whistle. The walk will be scheduled very shortly thereafter. The details will be posted on the Friends of the Delaware Canal Facebook page and www.fodc.org. A Constant Contract message will also be sent. To make sure that you receive the news, "like" the Friends on Facebook or send us your e-mail address, which will be added to our Constant Contact list.

Do Spring Peepers sound like "sleigh bells?" Do they make a "racket?" Are they "whistlers?" We shall find out.



A male Spring Peeper calling for a mate.

Saturday, April 22, 10:30 a.m. From Dock to Market

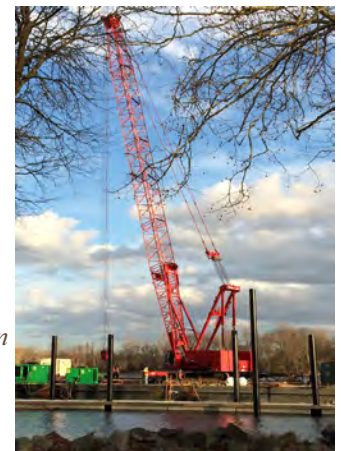
Meet in the large parking lot by the River and off of Mill Street in Bristol Borough.

Historic Bristol Borough is buzzing. The town triumphed over 14,000 entrants nationwide to win a \$500,000 marketing grant from the Deluxe Corporation, and the production of promotional videos is underway. Equally big news is the construction of the long-awaited dock, which will lure river boaters into town. Join us for a 4-mile roundtrip walk as we discover what's new (and old) in Bristol.

We will follow the Canal from its Delaware River terminus to the Amish Market at Green Lane. Beginning at Riverfront Park, we'll see the new dock, the Wharf, and the monuments that commemorate the town's citizens and their heritage. The Canal's past will come into view as we walk through the parking lot where canal boats gathered before being towed downriver to Philadelphia and pass by the Ring, the tide lock, and Lock 1 and its Locktender's House.

After crossing Mill Street, we'll encounter Locks 2 and 3 and two bump bridge locations. In an early "enterprise zone," we'll learn about Bristol's illustrious industrial past and present. The watered Canal will appear at the Grundy Mill and the lovely Lagoon, which is the only place on the Delaware Canal that was built specifically for recreation. From there, we'll hike along the towpath through a pleasant green canal corridor and arrive at the Amish Market at Green Lane. Soft pretzels and other goodies beckon inside. On our return back to town, we'll take in the sights that we missed.

This free walk will be held weather permitting. If in doubt, check for a message on the www.fodc.org homepage.



The new river dock under construction in Historic Bristol Borough.

Calendar of Events

Sunday, April 23, 2 p.m. Postponed from March “Carole’s Favorites”

Photos of Nature Along the Canal

Auditorium of the Washington Crossing Historic Park Visitor Center, 1112 River Road, Washington Crossing, PA 18977

Most of the current photos that you see on the Friends of the Delaware Canal Facebook page, in this newsletter, on www.fodc.org, and sometimes in the *Bucks County Herald* are taken by Carole Mebus, a Raubsville resident and dedicated Canal Tender. Since taking up photography after retirement, Carole has taken thousands of amazing images during her almost daily walks along the towpath. Her shots range from a once-in-a-lifetime bald eagle and heron encounter to a camelback bridge after a snowfall. Her good eye, a strong camera lens, and a sprinkling of magic are key to her accomplishments. (The “magic” component is not to be dismissed. How else can one explain why critters pose perfectly for Carole.)



A Rose Breasted Grosbeak on Flowering Quince.

The Friends are so honored that Carole has chosen to share her photos with us, so that we can share them with you. They promote the best of the Delaware Canal. In that spirit, the Friends and the Friends of the Washington Crossing Historic Park are partnering to present this spring’s program. It’s a compilation of Carole’s favorite images with particular emphasis on those that she took in 2016. Seeing the photos is just part of the treat. Carole will tell stories behind the shots and maybe share some of that magic.

We promise that you will leave the show awed by Carole’s photos and appreciative of the excellent and diverse habitat that the Delaware Canal provides.

Tuesday, May 9, 7:30 p.m. Bridges across the Delaware River

Riegelsville Borough Hall, 1st Floor Meeting Room, 615 Easton Road (Route 611) Riegelsville, PA 18077

The Delaware River is unusual (and, perhaps, even unique) in having canals running along both its east and west banks. To the east is the Delaware and Raritan Feeder Canal in New Jersey; to the west is the Delaware Canal in Pennsylvania. This convenient proximity has led to the promotion of the *Canal Loops*. Visitors are encouraged to walk and bike on the various length loop trails comprised of the two canal towpaths and the six Delaware River bridges that connect them.

The Friends of the Delaware Canal are familiar with the two canals, but the stories of the Delaware River bridges have yet to be shared. To fill in that void, Joe Donnelly, Deputy Executive Director of Communications for the Delaware River Joint Toll Bridge Commission, will enlighten us with an illustrated presentation about the river bridges that connect the *Canal Loops*, the soon-to-be constructed Scudders Falls Bridge, and some other interesting bridges to the north.

Joe Donnelly has bicycled long distance on both the PA and NJ canal towpaths, so he speaks from experience. He is known for sharing bridge history and “factoids” in entertaining ways, and he will highlight his presentation with outstanding photos. River bridges at dawn and dusk and lit up at night are quite spectacular. He also will tell a bit about what the Delaware River Joint Toll Bridge Commission does and its mission.

Don’t miss this chance to learn about the structures that span the River. Arrive early and see the graceful Roebling bridge or better yet walk across it to Riegelsville, NJ.



Riegelsville Bridge on a foggy morning.

Saturday, June 3, 10 a.m. Do a PA/NJ Canal Loop A National Trails Day Bicycle Ride and Picnic

Meet at the Virginia Forrest Recreation Area, 3292 River Road (Route 32), New Hope, PA 18938 (1.3 miles north of Centre Bridge)

In keeping with tradition, we’ll be bicycling on two canal towpaths on National Trails Day and doing our part to officially enjoy America’s vast network of recreational trails. Join the Friends and the Delaware Canal State Park staff for a 9-mile bike ride on the both the Delaware Canal in Pennsylvania and the Delaware and Raritan Canal in New Jersey.



Bicyclists will ride under the new Redfield Bridge on this year’s National Trails Day Bike Ride and Picnic.

Bring your bike and let State Park Educator Ian Kindle lead you on a guided tour. There are several new Canal structures to see along the way. This year the route will follow the Delaware Canal towpath south to Centre Bridge, then cross over the river bridge to connect with the D&R towpath trail in Stockton, NJ. From Stockton, bicyclists will head north to Bulls Island, NJ, then cross the pedestrian bridge to Lumberville, PA. After a short side trip north on the towpath to the Tohickon Aqueduct in Point Pleasant, everyone will head back to the Virginia Forrest Recreation Area.

A free picnic lunch of grilled hot dogs, chips, drinks, and dessert will be waiting there in the scenic canal and riverside picnic grove created by the Friends.

Note: Mountain bikes or hybrid tires are strongly encouraged, and helmets are required.

Please let us know if you are planning to attend by contacting the Friends at 215-862-2021 or friends@fodc.org.

Our Business and Institutional Members

Learn more about these Friends by clicking on their links at www.fodc.org.

Founder

Tinicum Civic Association

Benefactor

Holly Hedge Estate, New Hope
Hunterdon Hiking Club, Hunterdon County, NJ
Rockwood Wealth Management, New Hope
Walter's Nursery, Inc., Point Pleasant

Patron

1740 House, Lumberville
Acadia Mortgage, LLC, New Britain
Brett Webber Architects, P.C., Philadelphia and Erwinna
Ellenoff, Underwood & Norman, Doylestown
George E. Michael & Co., New Hope
Golden Pheasant Inn, Erwinna
John Paton, Inc. Doylestown
Newtown Bicycle and Fitness
Penn Community Bank, Perkasie
Scannapieco Development Corporation, New Hope
Tinsman Bros., Inc., Lumberville
William B. Parry & Son, Ltd., Langhorne

Member

Ahlum Gallery, Riegelsville
Appalachian Mountain Club, Delaware Valley Chapter
Borough of Morrisville
Bucks County Cottage on the Delaware, Yardley
Dilly's Corner, Centre Bridge
Edgar H. Denson, Post #79 American Legion, New Hope
Donnelly Marketing Services Associates, LLC
Eiseman Roofing & Exterior Construction, New Britain
First National Bank & Trust Company of Newtown
First Savings Insurance, New Britain
T. Foster & Co., Inc., Yardley
Gratz Gallery & Conservation Studio, New Hope
The Grundy Commons, Bristol
Hobensack & Keller, Inc., New Hope
Homestead General Store & Coffee Roasters, Upper Black Eddy
La Chele Medical Aesthetics, New Hope
Leisure Craft, Warrington
Liberty Bell Wanderers, Philadelphia
Lions Cross Country Booster Club, New Hope
Logan Inn, New Hope
McCaffrey's Markets, Yardley
Mueller's General Store & Kitchen, Easton
NAM Planning & Design, LLC, Lumberville
OMNIA Group Architects, Hatboro
Pete's Bike & Fitness Shoppe, Flemington, NJ
Porches Bed & Breakfast, New Hope
Sand Castle Winery, Erwinna
Univest National Bank & Trust Co
The UPS Store, New Hope
Washington Crossing Insurance Group
Wild Birds Unlimited, Buckingham

A Revelation from the North

by Susan Taylor

Date: Saturday, March 4

Place: Rochester, NY

Event: The Canal Society of New York State Winter Symposium

Outside the temperature was 13 degrees and the wind was whipping, but inside the community college conference center sat 100+ devotees of the Erie Canal – the canal that “changed America,” – the canal that spurred Pennsylvania legislators and entrepreneurs to jump into canal building whole hog – the canal that today is a tourism and economic development powerhouse.



At 9 a.m., those 100+ people were ready to view my presentation about the Delaware Canal. I showed the Canal at its best and worst during my “Commerce, Calamities and Conservation” PowerPoint with particular emphasis on how and why the waterway was preserved, the Canal’s comeback after the four recent floods, and how the Friends of the Delaware Canal have influenced the future of the Canal.

Why was I invited to speak? I was told that there were many small organizations under the Society’s umbrella that could learn from what the Friends have accomplished and that my program might be the inspiration for a field trip in 2018.

The presentation went well. There were ahhs when particularly beautiful photos of the Canal were projected, gasps at the extent of the flood damage, and questions at the end.

But what happened after I left the podium sparked a revelation. At least six people came up to me to say how lucky we were to still have a **real** canal – one that has many of its historic structures, has its same dimensions, and looks to a good extent as it did in the 1800’s. To my mind, these were people who were dealing with a very superior canal, but still they envied what we have on the Delaware Canal.

The experience drove home the ever-present need to evaluate and then vigilantly guard what makes the Delaware Canal so special. Change can be stealthy and manifest itself in tiny, virtually unnoticeable increments. Each time that the silt in the bottom of the Canal is simply pulled to the bank and not removed, the capacity of the water channel decreases. The action doesn’t seem like much at the moment, but over time Dramatic change can come cloaked in “necessity,” “economic feasibility,” and “redevelopment.”

Change is unremitting and often comes with excellent results, but we must be mindful not to lose the attributes of the Delaware Canal that make it special, loved, and even envied.

Delaware Canal Clean-Up Day Work Areas

Saturday, April 8

The list of this year's work areas follows. The names of the Clean-Up Day Coordinators or Canal Tenders are included for each area, and contact information is given if additional workers are requested. **Help is especially needed in the highlighted areas.** Please contact your local coordinator to volunteer.

Easton to Wy-Hit-Tuk Park

Tom Grube, Canal Tender – 610-810-6220 – tgrube7896@aol.com

Williams Twp.: Wy-Hit-Tuk Park to Mueller's Store

Carole Mebus, Canal Tender – 610-253-4214 – cemebus@fast.net

Riegelsville/Upper Black Eddy: Mueller's Store to Indian Rock Inn

Katie Martens, Park Educator – kmartens@pa.gov – 610-982-0161
In addition to on-land clean-up, Katie plans to bring some canoes for those who want to do some on-water work.

Upper Black Eddy: Indian Rock to Berm Lane

Roger Keller & UBEHPS, Canal Tenders – 610-982-5714 – rwk2001@gmail.com

Upper Black Eddy: Berm Lane to Lodi

Janice Armstrong and Steve Schlosser, Canal Tenders – 908-995-0605 – janarmstrong8@msn.com

Tinicum Twp.: Lodi to Uhlerstown

Happy & Sam Shipley, Canal Tenders – 215-990-2941 – ikoikoiko@earthlink.net

Tinicum Twp.: Uhlerstown to Lock 17

Appalachian Mountain Club, Del Val Chapter, Rich Einstein – 732-668-3774 – riche1943@aol.com

Tinicum Twp.: Lock 17 to Bridge 3

Sheree Cote and Tom Lurz, Canal Tenders – 215-297-0528 – kingsisl@comcast.net

Tinicum Twp.: Bridge 3 to Bridge 2

Peter Shaw, Canal Tender – 215-297-0374 – pddshaw@comcast.net

Point Pleasant: Bridge 2 to Mountainside Inn

Hank Goldberg, Canal Tender – 215-817-4915 – hankjoelgoldberg@gmail.com

Point Pleasant: Mountainside Inn to Lock 12

Sally Getchell, former Canal Tender – 215-297-8080 – sgetchell@comcast.net

Solebury Twp.: Lock 12 to Virginia Forrest Recreation Area

Monica Hemmers & Steve Heimann, Canal Tenders – 215-620-7186 – steveheimann@gmail.com

Solebury Twp.: Virginia Forrest to Centre Bridge

Daniel Schwager, Canal Tender – 215-297-9727 – dschwager@comcast.net

Solebury Twp.: Centre Bridge to Phillips' Mill

Robert McEwan, Canal Tender – 215-862-5229 – robertandmariamcewan@gmail.com

Solebury Twp.: Phillips' Mill to Rabbit Run

David & Vicky Child, Canal Tenders – 215-862-1402 or 215-862-3600 (store) – store4933@theupsstore.com

New Hope: Rabbit Run to Lock 9

Pam Can, Coordinator – 215-693-1757 – can0789@aol.com

New Hope: Lock 9 to Bowman's Hill

Ray and Sara Altieri, Canal Tenders – 215-862-9943 – sararayaltieri@aol.com

Solebury Twp./Upper Makefield Twp.: Bowman's Hill to Stoney Run Aqueduct

Central Bucks Bicycle Club, Nora and Randy Schenk, Canal Tenders – 215-579-0705 – norandy@verizon.net

Upper Makefield Twp.: Stoney Run Aqueduct to Mt. Eyre Road

Gordon Heisler & Traditions Volunteers, Canal Tenders – 215-493-1875 – heislog1@gmail.com

Lower Makefield Twp./Yardley: Mt. Eyre Road to Afton Avenue

Eileen Kileen & Yardley Friends Meeting – 215-369-1650 – eileenk29@yahoo.com

Yardley/Lower Makefield Twp.: Afton Ave. to Black Rock Road

Keith Webb, Canal Tender – 215-295-4063 – wwwebbss@hotmail.com

Lower Makefield Twp./Morrisville: Black Rock Road to Trenton Avenue

Hal Long & Morrisville-Yardley Area Rotary Club, Canal Tenders – 215-493-4962 – hlong2306@gmail.com

Morrisville: Trenton Avenue to Bridge Street

Mayor Dave Rivella, Coordinator – 215-295-5030 – mayordaverivella@aol.com

Morrisville: Bridge Street to the Railroad Obstruction

Lynn Vogel and Josh Gradwohl, Canal Tenders – 215-595-6114 – lvogel419@comcast.net

Falls Twp.: Railroad Obstruction to Tyburn Road

Jerry Taylor – 215-493-6625 – jerry.taylor35@verizon.net

Falls Twp.: Tyburn Road to Falls Twp. Park

Susan Taylor, Coordinator – 215-493-6625 – susanhtaylor@verizon.net

Falls Twp.: Falls Twp. Park to Mill Creek Road

Boy Scout Troop 46 – Renee Thompson, Coordinator – renee@fallstp.com

Falls Twp./Tullytown: Mill Creek Road to Levittown Shopping Center

Jeff Connell, Canal Tender – 732-581-9464 – jeffconnell@comcast.net

Bristol Twp.: Levittown Shopping Center (Sonic) to Green Lane

Ed Armstrong & GOAL (Greenbelt Overhaul Alliance of Levittown) – edarmstrong@verizon.net

(continued)

Clean-Up Work Areas

(continued)

Bristol Borough: Green Lane to Lagoon Park

Brett Webber, Coordinator – 215-840-2034 – bw@bwadesign.com

Bristol Borough: Lagoon Park to Riverfront Park

Jose Acevado, Canal Tender – cm317@comcast.net

Sharing Expertise

Pennsylvania is blessed with a wealth of parks, forests, and historic places. A visit to a Commonwealth-owned property will, in nearly every case, involve both an experience with nature and a contact with a historic place. For instance, the northern section of Washington Crossing Historic Park has within its boundaries the Thompson-Neely House and Soldiers' Graves as well as picnic pavilions, a Boy Scout camping ground, not to mention the Delaware Canal running through it.

Good administration of Pennsylvania's diverse resources takes a wide range of expertise. Knowledge about recreation, sustainability, preservation and maintenance practices need to be shared in order to best protect the State's irreplaceable treasures.

Currently the protection of these treasures is the responsibility of two different State agencies. Under the structure of Commonwealth of Pennsylvania government, the Department of Conservation and Natural Resources (DCNR) is responsible for conserving and sustaining the State's natural resources and the Historical and Museum Commission (PHMC) is responsible for collecting, conserving, and interpreting the State's historic heritage.

This March an important step was taken to ensure that expertise is shared. DCNR and PHMC are in the process of developing a formal consultation agreement that facilitates working more closely together on issues of management, conservation, and preservation of the historic resources under DCNR's ownership.

John Hallas, Director of the PA Bureau of State Parks, lauds this step forward. "DCNR, as a significant steward of the Commonwealth's cultural resources, is looking to make major improvements in our management practices for historic assets." He added that another positive aspect of the enhanced DCNR/PHMC relationship is that DCNR is launching a first-ever cultural resource plan for Point State Park in Pittsburgh. PHMC consulting services and mitigation funding will be used to develop the plan, which will serve as an archetype for incorporation into DCNR's park-specific planning documents.




History and recreation mix. Canal walkers visit the Thompson-Neely House.



Friday, June 16th

Historic Bristol Borough in Lagoon Park
Jefferson Avenue & Prospect Street | 6 to 8:30pm

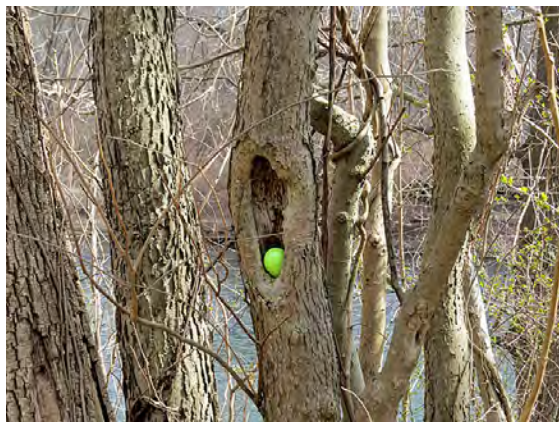
FOR DETAILS, PARADE APPLICATIONS, DUCK SALE LOCATIONS:

DelawareCanalFestival.org 

Decorate a boat! Decorate a duck! Win prizes!
Come witness all the creativity, eat, listen to music, and have fun!

Oh Where, Oh Where Could that Little Egg Be?

On April 9 one dozen eggs will be hidden along the Canal from Easton to Bristol. Find one and your prize will be a Friends of the Delaware Canal t-shirt or a Canal Critter finger puppet. Just follow the instructions inside the egg. Happy Hunting!



Friends of the Delaware Canal, Inc.

145 South Main Street
New Hope, PA 18938



Nonprofit Org.
US POSTAGE
PAID
Doylestown, PA
Permit No. 640

In Working Order Again

The canal lock model at the Locktender's House in New Hope provides the hands-on answer to the question "How does a lock work?" Built more than 15 years ago by a Palisades High School teacher and his students, the model features flowing water and a lock chamber in which a little boat can be raised and lowered. Best of all, it has never leaked.

Over the years the model lock gates and their wickets have been pulled and pushed tens of thousands of times by kids and adults. All that use wore out the gates, and they were no longer able to hold water back making the demonstration of locking through impossible.

Several attempts were made to build new gates, but none worked properly. Then to the rescue came woodworker Josh Gradwohl. (You may recognize the name since Josh built the Locktender's House garden fence, the front door, and replaced the mural plaza fascia boards.) Josh took all the old gates home, studied them, and devised a new gate design. The new gates are crafted from wood, which provides a more accurate depiction of real lock gates, and their miter joints are tight all the better to illustrate the water levels inside and outside the lock chamber.



Josh Gradwohl inspects the lock model gates that he built.

Josh once again shared his abilities as a fine craftsman with the Friends, and we are so grateful. This spring the lock model will be filled with water, and visitors will be able to lock a boat through all by themselves.

Welcome, New Friends

Michele Becci
Elizabeth Bennett
Lou Bristol
Neal Carson
Barbara Dalglish
William R. Krisak
Tamara Lesh
Jean McBryar
Kent Nash
Peggy Navitski
Suzanne Stahl
Inge and Christoph Stannik
Dave Sutton